



# Product Catalogue



# Improving public safety

Saferoads have over 32 years experience in the public safety industry.

We pride ourselves on being pioneers in the development of leading technology and solutions.

Saferoads is an ASX listed company specialising in the provision of innovative road safety solutions throughout Australia, New Zealand and North America. We supply state government departments, local councils, road construction companies and equipment hire companies with a broad range of products and services designed to direct, protect and inform the public.



# Contents



## SOLAR LIGHTING

### Permanent

Roadway Solar V-LED Light	5
Blade Solar Light – Galvanised Pole	6

### Portable

Blade Solar Light - Telescopic Pole	8
Blade Solar Light – Hinged Pole	10



## ELECTRONIC SIGNS

Nova VMS	14
Zone VMS Classic	16
Zone VMS Essential	18



## TEMPORARY BARRIERS

HV2 Barrier	21
T-Lok Barrier	22
Rubber T-Lok Barrier	24
Ironman Hybrid Barrier	26
SLED End Terminal	28
Rubber Guard Barrier	30
BIG Blockout Barrier	31



## SECURITY BOLLARDS

OmniStop Super Duty	33
OmniStop Ultra	34
Lockable Bollard	35
SlipLoc Bollard	36



## GUIDE POSTS

SupaSteel Guide Post	39
SnapLoc Guide Post	40



## TRAFFIC CALMING

Rumble Bars	43
Separation Kerb	44
Caterpillar Safe Cycle	46
Rubber Wheel Stop	47
Rubber Speed Humps	48
Rubber Kerbing	50
Rubber Speed Cushions	52



## VEHICLE MITIGATION

Rapid Stop Barrier	54
Rapid Stop Barrier Disabled Access	55
Rapid Stop Barrier Emergency Access	56



## CASE STUDIES

Coomera Connector, QLD	58
Parkes Special Activation Precinct	59
Department of Transport, VIC	60
Ventia, QLD	61
North East Link Project, VIC	62



# Solar Lighting

---



Affordable to run and simple to install, our solar LED lights are the ideal choice for areas facing difficulty connecting to trench power. Solar lighting is also a popular choice for environmentally conscious contractors and communities where safety, security and reducing carbon emissions is a critical part of the local government strategy.

# Roadway Solar V-LED Light



The Roadway Solar V-LED Light is the ideal solar lighting solution for areas without affordable access to power. This solar light has been designed to provide bright light throughout the night, outperforming the average on-grid street light.

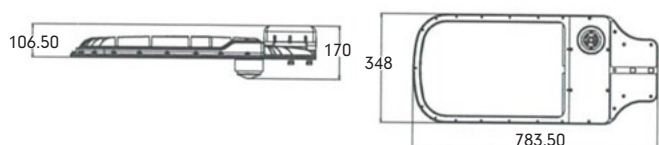
With new and improved technology in solar panels, batteries and LEDs, the Roadway Solar V-LED Light provides a powerful spread. It has been designed with ease of installation in mind, and does not require deep cycle gel batteries which need to be buried in the ground. This light has the battery storage to run at full capacity for several days, even in the case of inclement weather. Suitable for many applications, including remote roads, parklands, walking tracks, multi-use streetscapes, car parks, mining areas and blackspot locations.

- ✓ 75W Australian approved V-LED
- ✓ 320W solar panel
- ✓ Built-in lithium-ion batteries
- ✓ Heavy duty aluminium frame
- ✓ Smart city ready
- ✓ Direct bury, slip base pole
- ✓ Wind rating: Region C

## SPECIFICATIONS

<b>Product Code</b>	K20200106
<b>Body</b>	High Pressure Die Cast Aluminium
<b>LED</b>	CREE
<b>Wattage</b>	75W Aldridge V-LED
<b>Finishing</b>	Powder Coated (std. grey)
<b>Power</b>	320W Solar Panel
<b>Rating</b>	IP66 IK06

\*Please refer to [saferoads.com.au](http://saferoads.com.au) for the most up to date specifications



# Blade Solar Light – Galvanised Pole

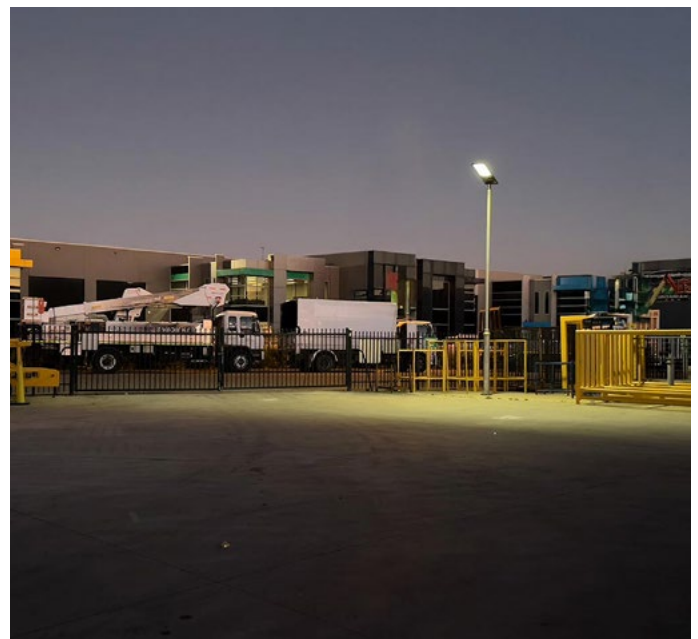
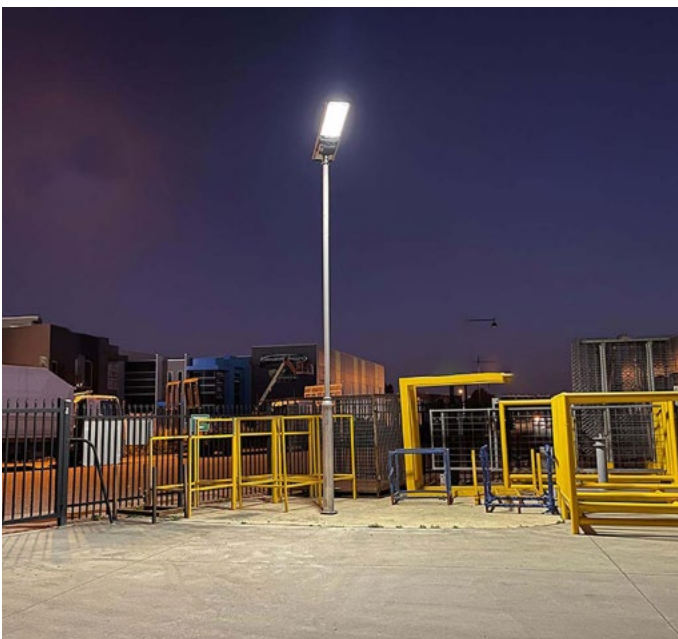


The innovative new Blade Solar Light is a commercial grade solar lighting solution that provides a no-fuss lighting solution with optimal light output throughout the night. Paired with a six metre galvanised steel light pole, this solar light suits many applications.

Simple to run and cable free, this programmable smart lighting system, with status indicators and motion sensor detection has an extra large 12.8V lithium iron phosphate battery which allows the light to run on sensor mode for seven days or more, even when there has been limited sunlight on overcast days.

The optional remote programmable smart lighting control system, can control multiple units at the same time in “set and forget” auto or manual mode. It also has a reach of up to 30 metres, and does not rely on direct line of sight to function.

- ✓ Premium grade commercial solar lighting
- ✓ 6m galvanised steel light pole with single outreach
- ✓ Surface or in-ground mount options for easy installation
- ✓ Optional remote programmable smart lighting
- ✓ Massive 66Ah battery capacity (up to 12.8V)
- ✓ 5 year product warranty and 3 year battery warranty
- ✓ Wind rating: Region C



# Blade Solar Light - Galvanised Pole

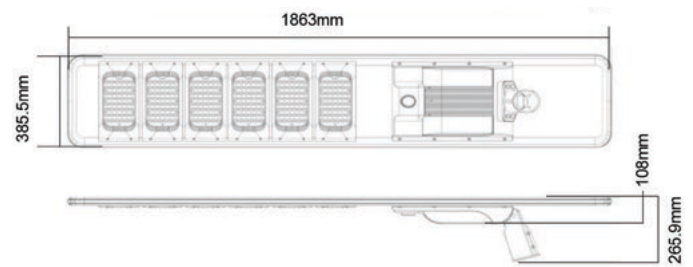
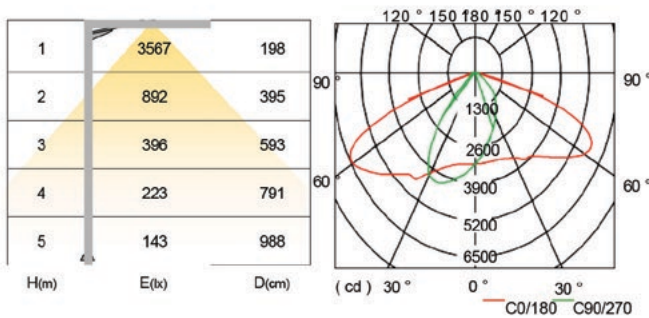
## SPECIFICATIONS

<b>Efficiency</b>	207lm/W
<b>Lumens</b>	15525lm
<b>Colour Temperature</b>	5000K
<b>CRI</b>	Ra≥70
<b>Beam Angle</b>	150° x 60°
<b>Weight (Light Head)</b>	22.5kg
<b>Battery Capacity</b>	12.8V/18AH
<b>Solar Panel Power</b>	125W
<b>Overall Pole Height</b>	6m
<b>Wind Rating</b>	Region C

## PRODUCT FEATURES & INCLUSIONS

207lm/W High Efficiency LED
Motion Sensor Status Indicator
0°- 7° Angle Adjustable Bracket
High Efficiency, Extra Large Solar Cells
12.8 Volt Lithium Iron Phosphate Battery
Easy Maintenance Battery Pack
Remote Control (optional)
High Brightness

\*Please refer to [saferoads.com.au](http://saferoads.com.au) for the most up to date specifications



# Blade Solar Light - Telescopic Pole



The perfect solution for off-grid, workzone lighting needs, the Blade Solar Light - Telescopic Pole is suitable for security lighting at roadworks and other construction sites

This premium grade commercial portable lighting solution has a programmable smart lighting system, with status indicators and motion sensor detection. The extra large 12.8V lithium iron phosphate battery has the capacity to allow the light to run for seven days or more on sensor mode. The rotationally moulded plastic base can be filled with an environmentally friendly concrete and recycled rubber mix, which is wind rated for regions A and B, and can be customised to your business in a range of base colour options with an indented space for placement of branding signage or stickers.

Deployment is simple and efficient. Simply place the unit in the desired location using a forklift, then winch from lowered to raised position in less than two minutes. The optional remote programmable smart lighting control system has a reach of up to 30 metres, and does not rely on direct line of sight to function. It also allows users to control multiple units at the same time in "set and forget" auto or manual mode, making it perfect for any worksite.

- ✓ Premium grade commercial solar lighting
- ✓ Newly designed hot dip galvanised (SHS) telescopic pole
- ✓ Optional remote programmable smart lighting
- ✓ Massive 66Ah battery capacity (up to 12.8V)
- ✓ 5 year product warranty and 3 year battery warranty
- ✓ Rotationally molded plastic base filled with eco-friendly concrete and recycled rubber mix
- ✓ 3 base options available to suit wind regions A, B and C. Refer to [saferoads.com.au](http://saferoads.com.au) for further details





# Blade Solar Light - Telescopic Pole

## SPECIFICATIONS

<b>Efficiency</b>	207lm/W
<b>Lumens</b>	15525lm
<b>Colour Temperature</b>	5000K
<b>CRI</b>	Ra≥70
<b>Beam Angle</b>	150° x 60°
<b>Weight (Light Head)</b>	22.5kg
<b>Battery Capacity</b>	12.8V/18AH
<b>Solar Panel Power</b>	125W
<b>Wind Rating</b>	Single concrete base - Wind Region A Double concrete base - Wind Region B & C

\*Please refer to saferoads.com.au for the most up to date specifications

## PRODUCT FEATURES & INCLUSIONS

207lm/W High Efficiency LED
Motion Sensor Status Indicator
0°- 7° Angle Adjustable Bracket
High Efficiency, Extra Large Solar Cells
12.8 Volt Lithium Iron Phosphate Battery
Easy Maintenance Battery Pack
Remote Control (optional)
High Brightness

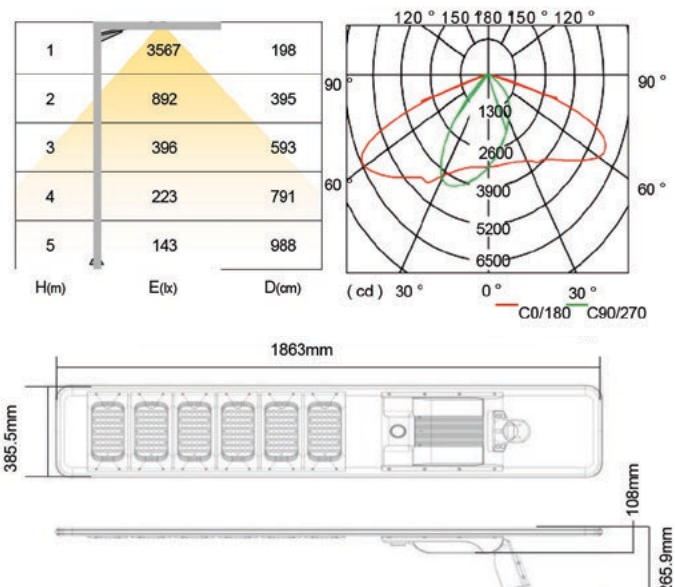
## BASE OPTIONS

The telescopic pole is available with three base options to suit all installation requirements.

The rotationally molded plastic base can be filled with an environmentally friendly concrete and recycled rubber mix and is suitable for wind regions A and B. This option has an indented space for branding signage and can be customised to suit your business in a range of colours.

Pairing the solar light with a concrete base provides an extremely sturdy lighting solution that is wind rated for Region A with the single concrete base option, and Regions B and C with the double concrete base.

Telescopic Pole	Plastic Base Wind Region A & B	Single Concrete Block Wind Region A	Double Concrete Block Wind Region B & C
<b>Collapsed Overall Height</b>	2.6m	2.6m	2.9m
<b>Expanded Overall Height</b>	6.6m	6.6m	6.9m
<b>Base Weight</b>	950kg	750kg	1700kg
<b>Overall weight of a complete light with telescopic mast</b>	1,090kg	890kg	1,840kg



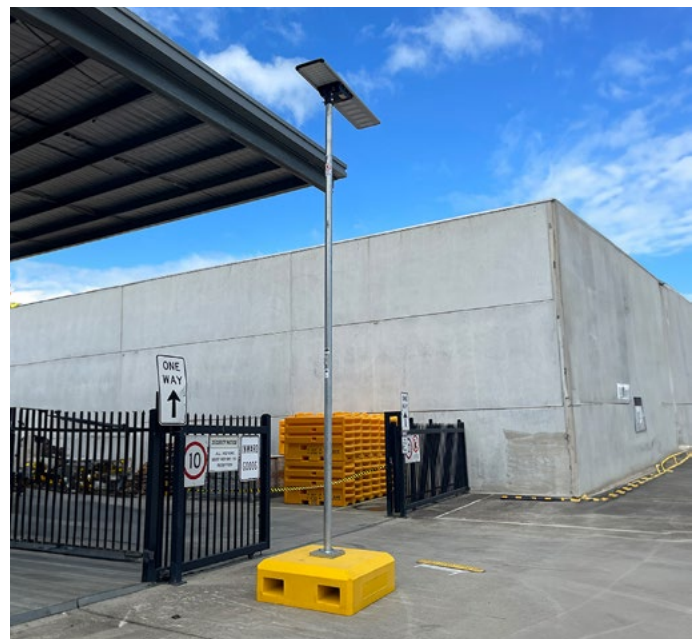
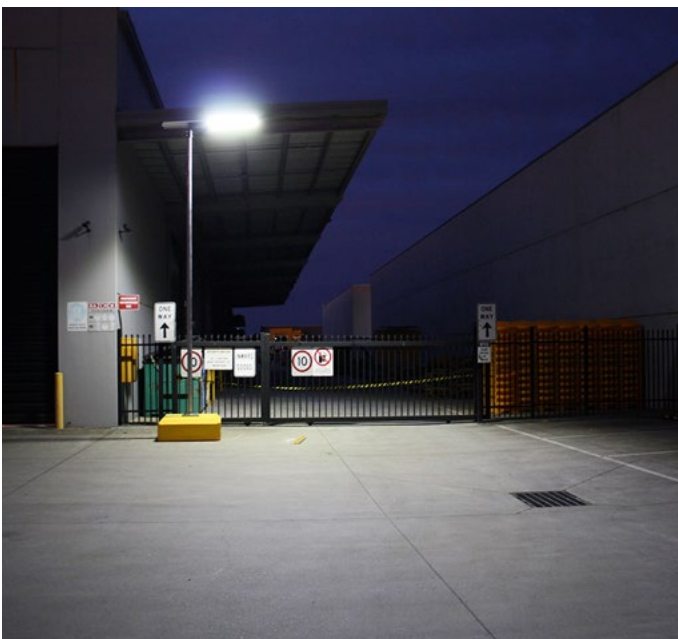
# Blade Solar Light - Hinged Pole



The Blade Solar Light deployed with a six metre galvanised steel hinged pole is a premium grade commercial portable solar lighting solution. The programmable smart lighting system, with status indicators and motion sensor detection has an extra large 12.8V lithium iron phosphate battery which allows the light to run on sensor mode for seven days or more, even on overcast days.

This solar light has an optional remote programmable smart lighting control system, which has a reach of up to 30 metres, and does not rely on direct line of sight to function. It also allows users to control multiple units at the same time in "set and forget" auto or manual mode.

- ✓ Premium grade commercial solar lighting
- ✓ Hinged galvanised steel 6m light pole
- ✓ Unique base with hinge design allows for ease of deployment
- ✓ Optional remote programmable smart lighting
- ✓ Massive 66Ah battery capacity (up to 12.8V)
- ✓ 5 year product warranty and 3 year battery warranty
- ✓ 3 base options available to suit wind regions A, B and C. Refer to [saferoads.com.au](http://saferoads.com.au) for further details



# Blade Solar Light - Hinged Pole

## SPECIFICATIONS

Efficiency	207lm/W
Lumens	15525lm
Colour Temperature	5000K
CRI	Ra≥70
Beam Angle	150° x 60°
Weight (Light Head)	22.5kg
Battery Capacity	12.8V/18AH
Solar Panel Power	125W

## PRODUCT FEATURES & INCLUSIONS

207lm/W High Efficiency LED
Motion Sensor Status Indicator
0°- 7° Angle Adjustable Bracket
High Efficiency, Extra Large Solar Cells
12.8 Volt Lithium Iron Phosphate Battery
Easy Maintenance Battery Pack
Remote Control (optional)
High Brightness

## BASE OPTIONS

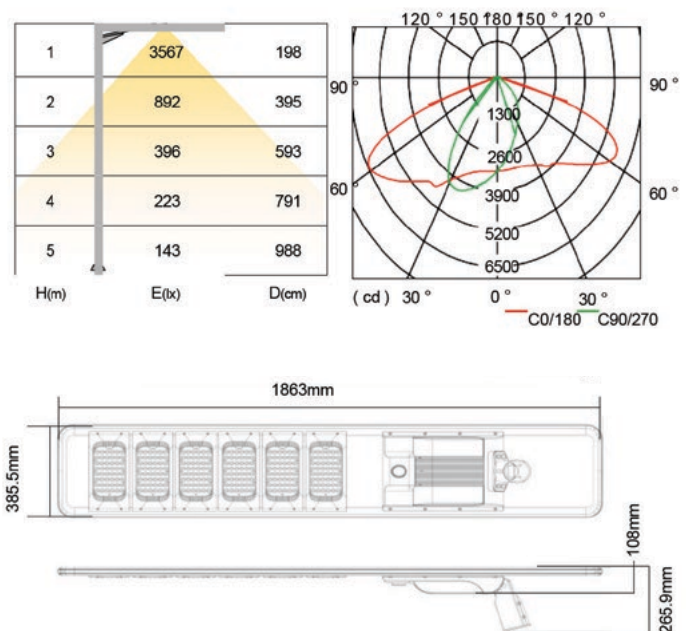
The hinged pole provides easy deployment despite its height, and is available with three base options to suit all installation requirements;

The rotationally molded plastic base can be filled with an environmentally friendly concrete and recycled rubber mix and is suitable for wind regions A and B. This option has an indented space for branding signage and can be customised to suit your business in a range of colours.

Pairing the solar light with a concrete base provides an extremely sturdy lighting solution that is wind rated for Region A with the single concrete base option, and Regions B and C with the double concrete base.

Hinged Pole	Plastic Base Wind Region A & B	Single Concrete Block Wind Region A	Double Concrete Block Wind Region B & C
Overall Height	6.0m	5.8m	6.1m
Weight	950kg	750kg	1700kg
Overall weight of a complete light with hinged pole	1,035kg	835kg	1,785kg

\*Please refer to [saferoads.com.au](http://saferoads.com.au) for the most up to date specifications



**We offer industry expertise and the best products available worldwide.**





# Electronic Signs



Do you want to display your message in a way that's sure to catch the eye of passers-by? Whether it's a safety message or advertising, VMS Boards are the ideal solution. Also known as variable message signs or trailers, they are popular in a range of sectors, from roads and freeways, construction, to consumer sales, mining and utility industries. At Saferoads, you can be confident you're investing in premium electronic road signs – assembled and built locally, our variable message boards undergo quality assurance testing before they're supplied to our customers.



# Nova VMS

Innovative and unique, the Nova variable message sign has the option of removing the sign from the trailer, offering users deployment that can be achieved in less than 10 minutes. The unit detaches from the trailer leaving the assembly with fully concealed batteries mounted underneath the chassis. This prevents vandalism access, ensuring the security of the asset. Up to 4 units can be transported per heavy rigid truck, and five units per semi trailer truck. For ease of deployment in regional or remote areas, the Nova can be delivered by Hiab Truck and lifted into place.

Available in amber or five colour, the Nova VMS can be easily controlled from a smartphone or tablet, from any location. The Zone 2 management platform enables messages and schedules to be updated with ease. All Saferoads VMS customers have access to 24/7 Australian support services.



- ✓ C-Size VMS with unit that detaches from the trailer
- ✓ Deployed in less than 10 minutes
- ✓ Reduces the risk of vandalism
- ✓ Requires minimal maintenance with no hydraulics!
- ✓ Australian designed and built
- ✓ Fully galvanised and powder coated
- ✓ Stabiliser legs controlled by low speed drill or impact wrench
- ✓ Electric mast system controlled by batteries/screw drive mechanism
- ✓ Amber or five colour (blue, green, amber, red and white) options
- ✓ Accessible from any browser/smartphone/tablet device
- ✓ Zone Cloud Software is 100% Australian developed, owned and hosted
- ✓ 12V 200AH batteries are securely mounted and concealed underneath the chassis
- ✓ 2 x 200W solar panels



# Nova VMS

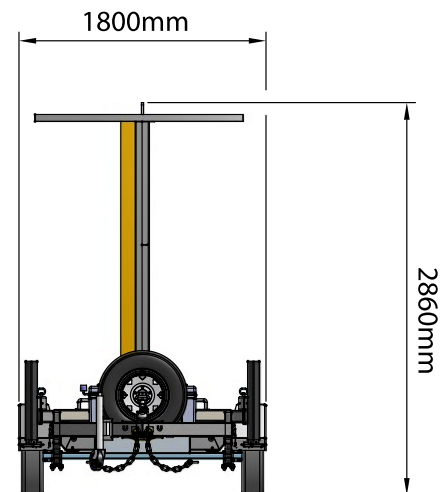
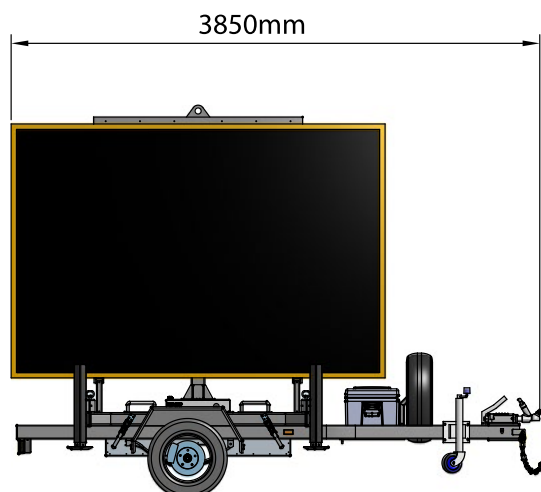
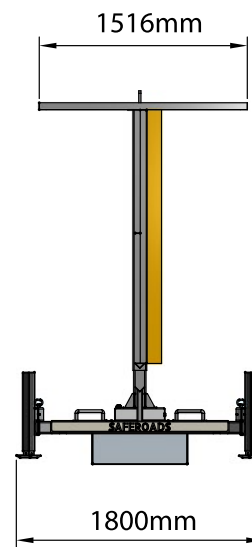
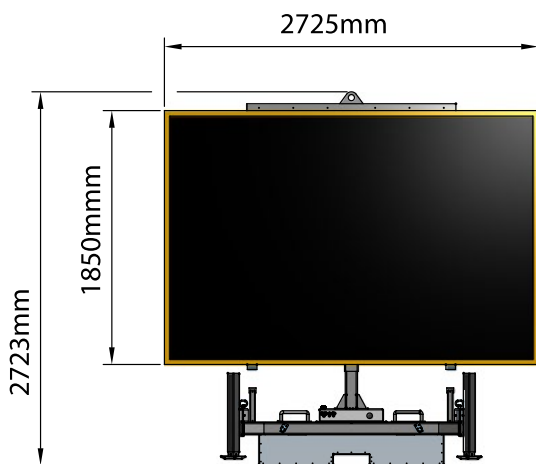
## SPECIFICATIONS

<b>Model</b>	Amber or 5 Colour
<b>Weight (Overall)</b>	1150kg
<b>Weight (Trailer Only)</b>	250kg
<b>Travelling Length</b>	3850mm
<b>Travelling Width</b>	1800mm
<b>Travelling Height</b>	2860mm
<b>Max Deployed Width</b>	3000mm
<b>Max Deployed Length</b>	3000mm
<b>Max Deployed Height</b>	4120mm
<b>No of 12V 200AH Batteries</b>	Amber - 2 / 5 Colour - 3
<b>No of 200W Solar panels</b>	2

\*Please refer to [saferoads.com.au](http://saferoads.com.au) for the most up to date specifications

## PRODUCT FEATURES & INCLUSIONS

LED Display
48 x 28 Full Matrix LED Pixels
400mm Character Height
Galvanised Removable Trailer
Extendable Stabilising Outriggers
Automatic Brightness/Dimming
No Software To Install
Checker Plate Floor
Sealed Pelican Case on Trailer
Program Using Any Tablet/Smartphone
Scheduling Software Allows Pre Programming
Spare Wheel
Radar System for Speed Monitoring - Optional
Remotely Monitor Battery Levels, GPS Location, Power And Usage Settings



# Zone VMS Classic

The Zone VMS Classic is our most popular and multifaceted variable message sign. Slightly larger than the Essential model, the Zone VMS Classic has additional solar panels that can tilt and rotate.

Available in either amber or five colour fonts, the solar powered Zone Classic board is designed to be easily controlled via smartphone or tablet, ensuring your display reads correctly wherever its located. Zone 2 management platform enables you to schedule future messages so you can set and forget, with 24/7 access to our Australian based support team available to all users.



- ✓ C-Size VMS
- ✓ Made to the highest quality standards
- ✓ Amber or five colour (blue, green, amber, red and white) options
- ✓ Heavy duty
- ✓ Fully galvanised and powder coated
- ✓ Australian designed and built
- ✓ Remote access
- ✓ Easy to use internet platform
- ✓ Zone Cloud Software is 100% Australian developed, owned and hosted
- ✓ Accessible from any browser / smartphone / tablet device
- ✓ Option to schedule future messages
- ✓ 24/7 Australian support
- ✓ On board message manager
- ✓ 4 x 12V 200AH batteries with on board battery charger
- ✓ 3 x 200W solar panels that tilt and rotate
- ✓ Fully sealed tool boxes with gas struts
- ✓ Checker plate floor
- ✓ Spare wheel





# Zone VMS Classic (C-Size)

## SPECIFICATIONS

<b>Product Code</b>	Amber F1504001C5	Colour F1504001P
<b>Weight (TARE)</b>	1180kg	1180kg
<b>ATM</b>	1500kg	1500kg
<b>Length Overall</b>	3650mm	3650mm
<b>Width Overall</b>	2080mm	2080mm
<b>Height Travelling</b>	2930mm	2930mm
<b>Deployed Footprint Length</b>	3650mm	3650mm
<b>Deployed Footprint Width</b>	2725mm	2725mm
<b>Max Deployed Height</b>	5300mm	5300mm
<b>Number of 12V 200AH Batteries</b>	4	4
<b>No. of 200W Solar Panels</b>	3	3

\*Please refer to [saferoads.com.au](http://saferoads.com.au) for the most up to date specifications

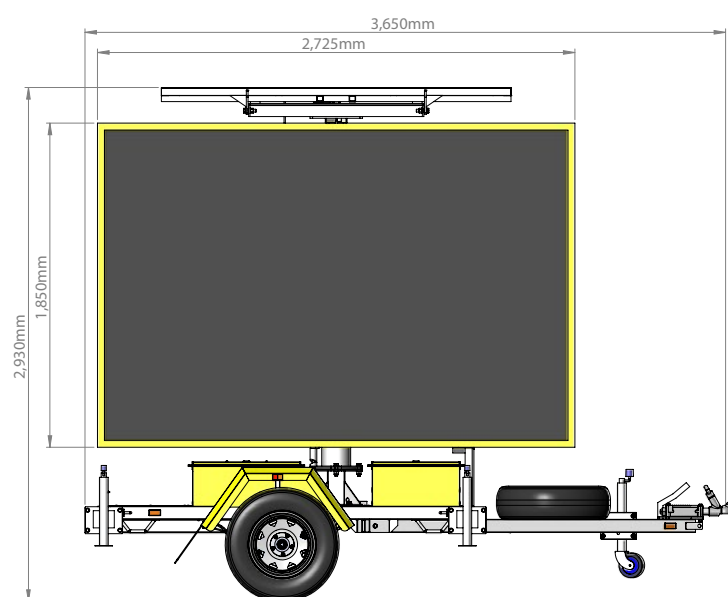
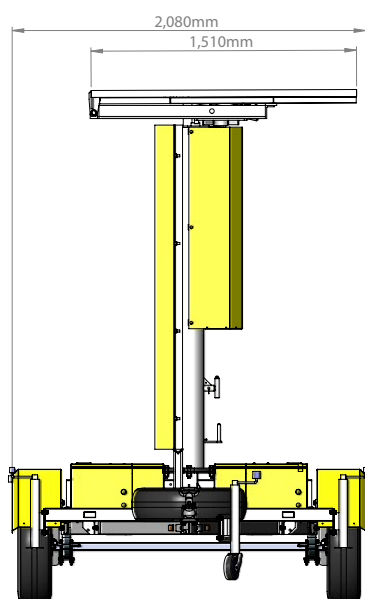
## PRODUCT FEATURES & INCLUSIONS

LED Display
48 x 28 Full Matrix LED Pixels
400mm Character Height
Galvanised/Powder Coated Trailer with Extendable Stabilising Outriggers
On Board Battery Charger
Automatic Brightness/Dimming
No Software To Install
Solar Panel Tilts and Rotates
360 Degree Rotatable Display
Checker Plate Floor
On-Board Message Manager
Fully Sealed Tool Boxes with Gas Struts
Program Using Any Tablet / smartphone
Remotely Monitor Battery Levels, GPS Location, Power Usage and Settings
Scheduling Software Allows Pre Programming
Spare Wheel
Radar System for Speed Monitoring - Optional



## HYBRID VMS

A Hybrid version of this VMS is available. The Hybrid VMS does not include the tilt and rotate feature on the solar panels.



# Zone VMS Essential

Essential by name, essential by nature - the Zone VMS Essential is the budget friendly way to keep drivers and workers safe on roadwork sites, or to advertise businesses or events with ease. Designed and built in Australia, you can take advantage of our 24/7 Australian support services.

Available in amber or five colour display options, the Zone Essential variable message board can be easily controlled from your smartphone or tablet, wherever you're located. Powered with solar energy, it's an affordable and effective solution for all of your signage needs.



- ✓ C-Size VMS
- ✓ Made to the highest quality standards
- ✓ Amber or five colour (blue, green, amber, red and white) options
- ✓ Heavy duty
- ✓ Fully galvanised and powder coated
- ✓ Australian designed and built
- ✓ Remote access
- ✓ Easy to use internet platform
- ✓ Zone Cloud Software is 100% Australian developed, owned and hosted
- ✓ Accessible from any browser / smart phone / tablet device
- ✓ Option to schedule future messages
- ✓ 24/7 Australian support
- ✓ 12V 200AH batteries (Amber x 2, Colour x 3)
- ✓ 2 x 200W solar panels



# Zone VMS Essential (C-Size)

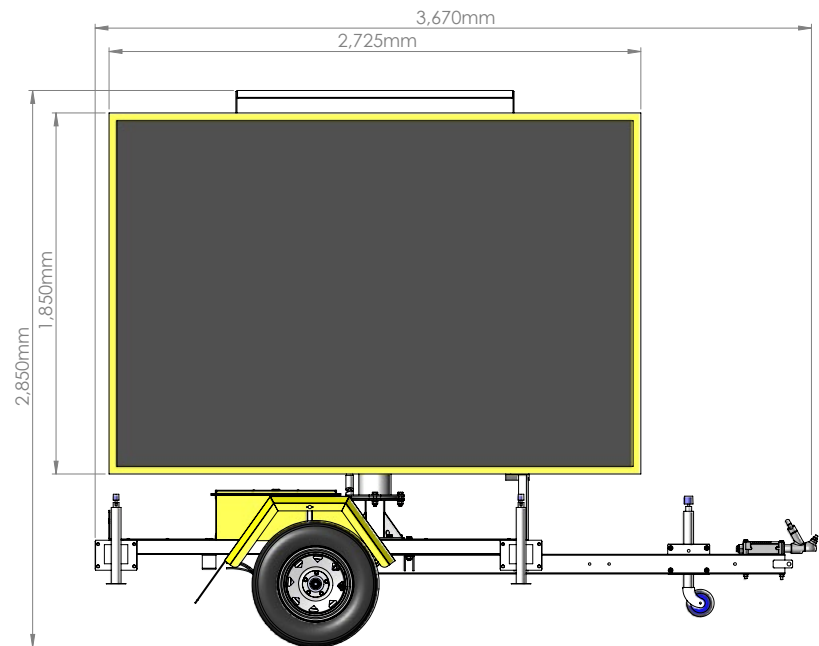
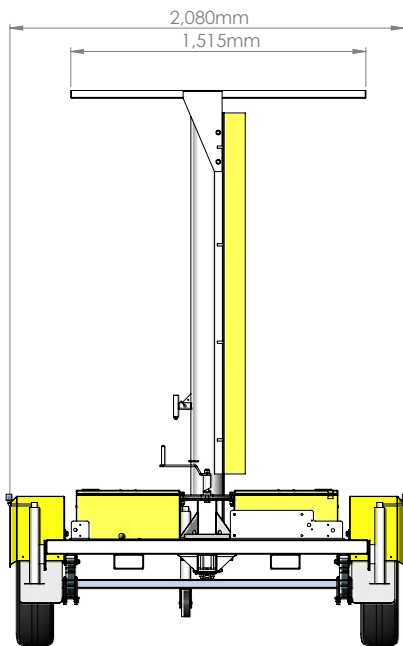
## SPECIFICATIONS

<b>Product Code</b>	Amber F1504001E5	Colour F1504001EC
<b>Weight (TARE)</b>	800kg	860kg
<b>ATM</b>	1500kg	1500kg
<b>Length Overall</b>	3670mm	3670mm
<b>Width Overall</b>	2080mm	2080mm
<b>Height Travelling</b>	2850mm	2850mm
<b>Deployed Footprint Length</b>	3670mm	3670mm
<b>Deployed Footprint Width</b>	2725mm	2725mm
<b>Max Deployed Height</b>	4200mm	4200mm
<b>Number of 12V 200AH Batteries</b>	2	3
<b>No. of 200W Solar Panels</b>	2	2

\*Please refer to [saferoads.com.au](http://saferoads.com.au) for the most up to date specifications

## PRODUCT FEATURES & INCLUSIONS

LED Display
48 x 28 Full Matrix LED Pixels
400mm Character Height
Galvanised/Powder Coated Trailer With Extendable Stabilising Outriggers
Automatic Brightness/Dimming
No Software To Install
360 Degree Rotatable Display
Checker Plate Floor
Program Using Any Tablet/Smart Phone
Remotely Monitor Battery Levels, GPS Location, Power Usage And Settings
Scheduling Software Allows Pre Programming
On Board Battery Charger - Optional
On-Board Message Manager - Optional
Spare Wheel - Optional
Radar System For Speed Monitoring - Optional





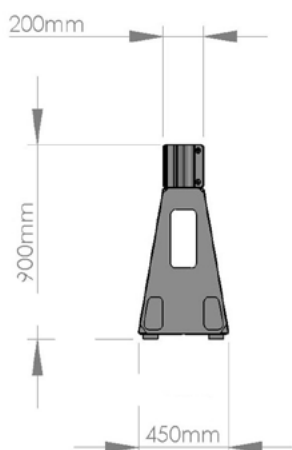
# Temporary Barriers

---



Saferoads is one of the world leading innovators in road safety barrier systems. Our range of barriers are independently crash tested and approved, and can therefore be used with confidence. Our traffic barriers contribute to the reduction of work zone related crash incidents.

# HV2 Barrier



With patented hybrid technology and unique connectors, the HV2 Barrier offers high containment and low deflection upon impact, while remaining economical to transport and deploy.

The HV2 Barrier is the first and only unanchored steel barrier to be successfully crash tested to MASH TL-4, and is approved by the Austroads Safety Barrier Assessment Panel (ASBAP) to 100km/h.

- ✓ **ASBAP approval to 100km/h**
- ✓ Freestanding barrier
- ✓ High containment
- ✓ Safe redirection
- ✓ Rapid deployment and retrieval
- ✓ No anchoring required
- ✓ Maintenance free
- ✓ Multiple end treatments can be used; approved with SLED and QuadGuard M10 CZ
- ✓ Sight / debris screen available
- ✓ Durable
- ✓ Economical to transport
- ✓ Lightweight

## SPECIFICATIONS

<b>Product code</b>	<b>F1304028</b>
<b>Effective Length</b>	5.8m
<b>Height</b>	900mm
<b>Width</b>	450mm
<b>Weight</b>	2088kg
<b>Weight Per Metre</b>	360kg
<b>Successfully Tested To</b>	MASH TL-4
<b>ASBAP Approval To</b>	100km/h
<b>MASH TL-3 Deflection</b>	1.47M
<b>Amount Transportable Per Semi Truck</b>	10

\*Please refer to [saferoads.com.au](http://saferoads.com.au) for the most up to date specifications

Approved by



# T-Lok Barrier



The T-Lok Barrier is a freestanding, temporary redirective longitudinal barrier successfully crash tested to MASH TL-3. Featuring a new and improved design, this precast concrete F-type barrier has an Austroads Safety Barrier Assessment Panel (ASBAP) approval to 100km/h.

Anti sight / debris screens can be fitted to the barriers providing additional protection for workers from items falling off passing trucks, as well as reducing the risk to motorists from "gawking" drivers becoming distracted or slowing unexpectedly when passing roadworks.

- ✓ **ASBAP approval to 100km/h**
- ✓ Freestanding barrier
- ✓ Low deflection
- ✓ Safe redirection
- ✓ Fast deployment and retrieval
- ✓ No anchoring required
- ✓ Maintenance free
- ✓ Multiple end treatments can be used
- ✓ Sight / debris screen options bolt on
- ✓ Available in either 3.66m or 5.49m lengths
- ✓ Can be deployed with Steel Wedge (engineered angle pieces) to accommodate tight radius projects. \*Refer to page 23 for further information

## SPECIFICATIONS

Product code	F1303000	F1303001
Effective Length	3.66m	5.49m
Height	810mm	810mm
Width	610mm	610mm
Weight	2600kg	3900kg
Weight Per Metre	722kg	722kg
Successfully Tested To	MASH TL-3	MASH TL-3
ASBAP Approval To	100km/h	100km/h
MASH TL-3 Deflection	1.27m	1.27m
Amount Transportable Per Semi Truck	9	6

\*Please refer to [saferoads.com.au](http://saferoads.com.au) for the most up to date specifications



Approved by



# T-Lok Barrier

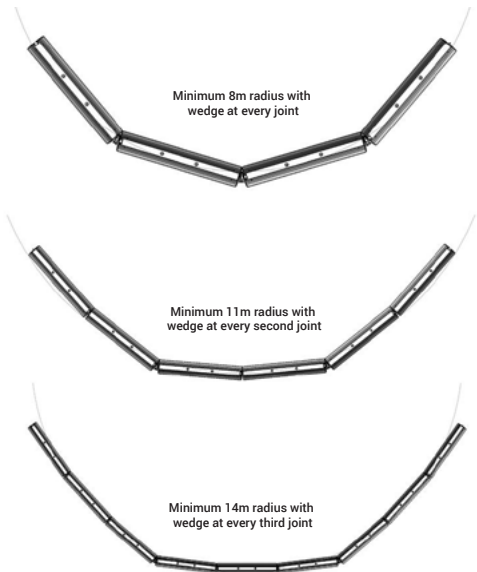
## RADIUS SOLUTION FOR T-LOK BARRIERS

Saferoads have developed an innovative traffic delineation and worksite protection solution that is able to provide a continuous temporary traffic barrier deployment at a tight radius. The Saferoads T-Lok Steel Wedge incorporates a steel wedge piece which can be used in-between individual T-Lok freestanding temporary concrete barriers to facilitate placement at tighter radii. The Saferoads T-Lok Wedge offers a significant advantage over traditional barrier deployments as the radius can be as tight as 8m.

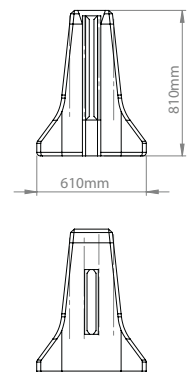
## STEEL WEDGE

- ✓ **ASBAP approval to 60km/h**
- ✓ Enables the 3.66m barrier to be deployed on a radius as tight as 8m
- ✓ Enables the 5.49m barrier to be deployed on a radius as tight as 12m
- ✓ 5m design deflection where wedges are used
- ✓ Improved efficiency during staged intersection deployment
- ✓ Vast improvement on safety due to the continuous barrier placement without the need for crash cushions

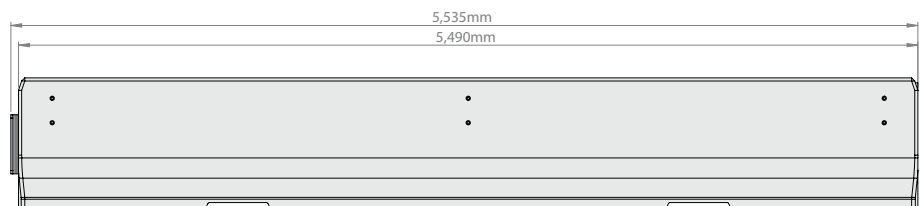
## RADIUS ACHIEVED WITH STEEL WEDGE



T-Lok 3.66m



T-Lok 5.49m



# Rubber T-Lok Barrier



For every 1km of Rubber T-Lok Barrier produced, 12 tonnes of recycled tyres are used - equivalent to 2,000 passenger tyres.

An Australian ingenuity, the NEW Rubber T-Lok temporary barrier is an innovative road safety barrier that uses crumb rubber from end of life tyres to produce a product that improves safety and combats waste. This is the first temporary crash barrier with a recycled component, and is pioneering sustainability in the road safety barrier product industry.

The inclusion of recycled rubber enhances the flexibility and durability of the T-Lok barrier, resulting in better energy absorption, enhanced safety, and increased barrier lifespan.

The Rubber T-Lok Barrier is a free standing, temporary longitudinal barrier system successfully crash tested to MASH TL-3.

This precast concrete F-type barrier has an Austroads Safety Barrier Assessment Panel (ASBAP) approval to 100km/h.



- ✓ **ASBAP approval to 100km/h**
- ✓ Freestanding barrier
- ✓ Combats waste with the inclusion of recycled rubber
- ✓ Increased energy absorption
- ✓ Low deflection
- ✓ Safe redirection
- ✓ Fast deployment and retrieval
- ✓ No anchoring required
- ✓ Increased barrier lifespan
- ✓ Multiple end treatments can be used
- ✓ Sight / debris screen options bolt on
- ✓ Available in either 3.66m or 5.49m lengths



Approved by





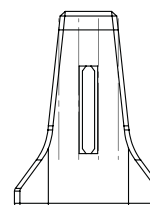
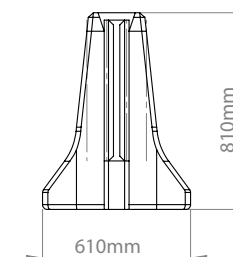
# Rubber T-Lok Barrier

## SPECIFICATIONS

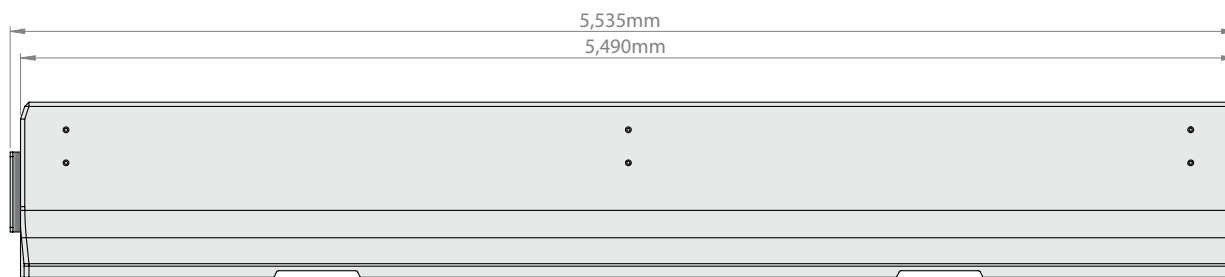
Product code	F1303000-2	F1303001-2
Effective Length	3.66m	5.49m
Height	810mm	810mm
Width	610mm	610mm
Weight	2600kg	3900kg
Weight Per Metre	722kg	722kg
Successfully Tested To	MASH TL-3	MASH TL-3
ASBAP Approval To	100km/h	100km/h
MASH TL-3 Deflection	1.76m	1.76m
Amount Transportable Per Semi Truck	9	6

\*Please refer to [saferoads.com.au](http://saferoads.com.au) for the most up to date specifications

Rubber T-Lok 3.66m



Rubber T-Lok 5.49m



# Ironman Hybrid Barrier



The Ironman Hybrid Barrier is a fully compliant, freestanding, crash tested barrier system. Its lightweight and stackable design offers transport cost savings when compared to traditional concrete barriers.

The barrier allows for curves of up to six degrees, ensuring it follows the road perfectly.

Successfully crash tested to MASH TL-2 this steel barrier has an Austroads Safety Barrier Assessment Panel (ASBAP) approval to 70km/h.

- ✓ **ASBAP approval to 70km/h**
- ✓ Freestanding barrier
- ✓ Safe redirection
- ✓ Fast deployment and retrieval
- ✓ No anchoring required
- ✓ Maintenance free
- ✓ Approved with freestanding SLED End Treatment
- ✓ Sight / debris screen options available
- ✓ Durable
- ✓ Economical to transport
- ✓ Lightweight
- ✓ Can be deployed with Steel Wedge (engineered angle pieces) to accommodate tight radius projects. Refer to page 23 for further information.

## SPECIFICATIONS

<b>Product code</b>	<b>F1302000</b>
<b>Effective Length</b>	4.15m
<b>Height</b>	813mm
<b>Width</b>	546mm
<b>Weight</b>	925kg
<b>Weight Per Metre</b>	225kg
<b>Successfully Tested To</b>	MASH TL-2
<b>ASBAP Approval To</b>	70km/h
<b>MASH TL-2 Deflection</b>	1.49M
<b>Amount Transportable Per Semi Truck</b>	24 (stacked in two layers)

\*Please refer to [saferoads.com.au](http://saferoads.com.au) for the most up to date specifications



Approved by



# Ironman Hybrid Barrier

## RADIUS SOLUTION FOR IRONMAN HYBRID BARRIERS

Saferoads have developed a bespoke custom Ironman Hybrid Steel Wedge that enables the Ironman Hybrid Barriers to be deployed at a tighter radius. The Ironman Steel Wedge is incorporated in-between individual Ironman Hybrid temporary barriers, allowing placement at a tighter radii. The Saferoads Ironman Hybrid Wedge offers a significant advantage over traditional barrier deployments as the radius can be as tight as 10m.

- ✓ **ASBAP approval to 60km/h**
- ✓ Facilitates placement of Ironman Hybrid Barriers at tighter radii
- ✓ Enables the Ironman Hybrid barrier to be deployed on a radius as tight as 10m
- ✓ 5m design deflection where wedges are used
- ✓ Improved efficiency during staged intersection deployment
- ✓ Vast improvement on safety due to the continuous barrier placement without the need for crash cushions



# SLED End Terminal

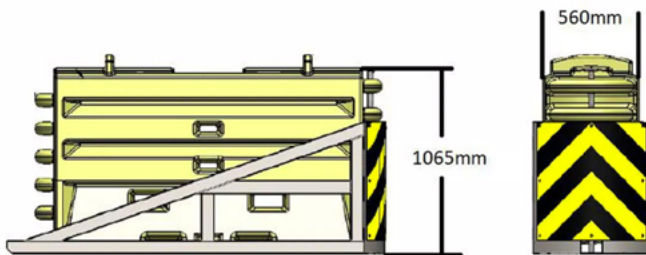


The Sentry Longitudinal Energy Dissipater (SLED) end terminal is a narrow, non re-directive gating crash cushion.

SLED is designed to shield the end of all concrete temporary barriers. The unique design incorporates four internal steel cables, which help envelop the impacting vehicle - reducing the possibility of secondary accidents.

This end terminal has an Austroads Safety Barrier Assessment Panel (ASBAP) approval to 80km/h on all approved concrete barriers.

- ✓ **ASBAP approved to 80km/h**
- ✓ Easily replaced after impact
- ✓ Successfully tested to MASH TL-3
- ✓ Durable
- ✓ Fast deployment and retrieval
- ✓ No anchoring required
- ✓ Maintenance free
- ✓ Water filled
- ✓ Non re-directive



## SPECIFICATIONS

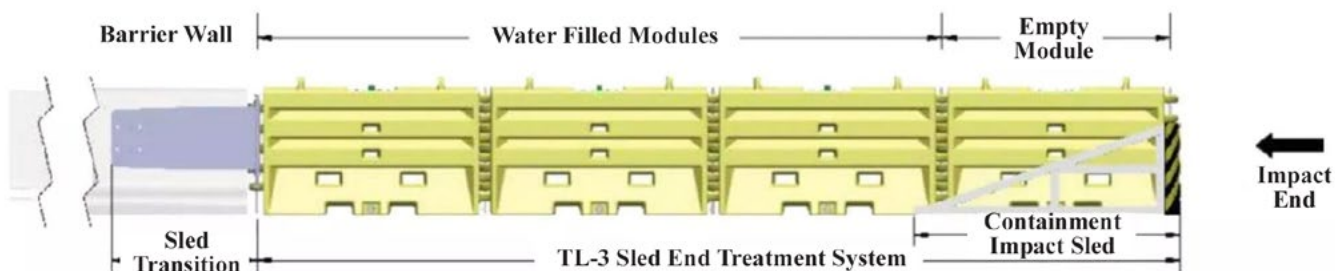
<b>Product code</b>	<b>F1304016</b>
<b>TL-3 Length</b>	7.7m
<b>Width</b>	685mm
<b>Height</b>	1066mm
<b>Successfully Tested To</b>	100km/h
<b>ASBAP Approval To</b>	80km/h
<b>Material</b>	UV Stabilized Polyethylene
<b>Fill</b>	Water
<b>After Impact</b>	Easily Replaced
<b>Tested To</b>	MASH TL-3
<b>Reusable</b>	Nose and Transition Can Be Reused After Most Impacts

\*Please refer to [saferoads.com.au](http://saferoads.com.au) for the most up to date specifications

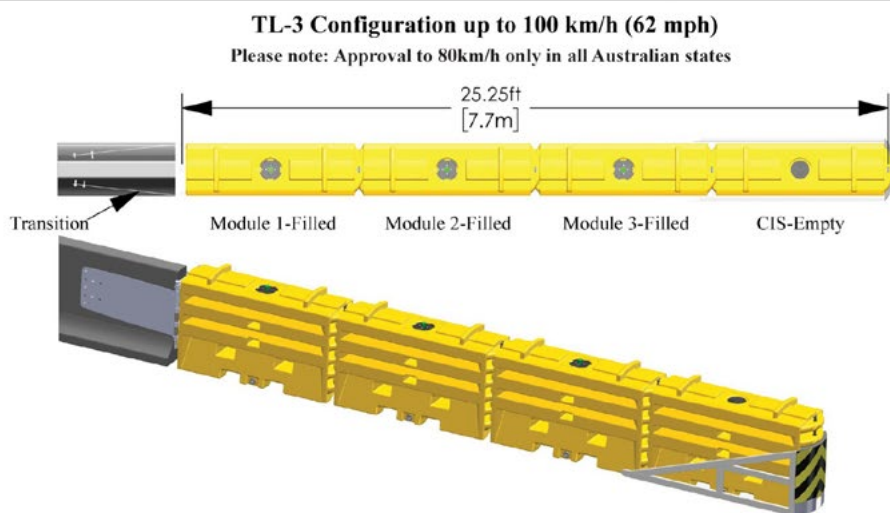
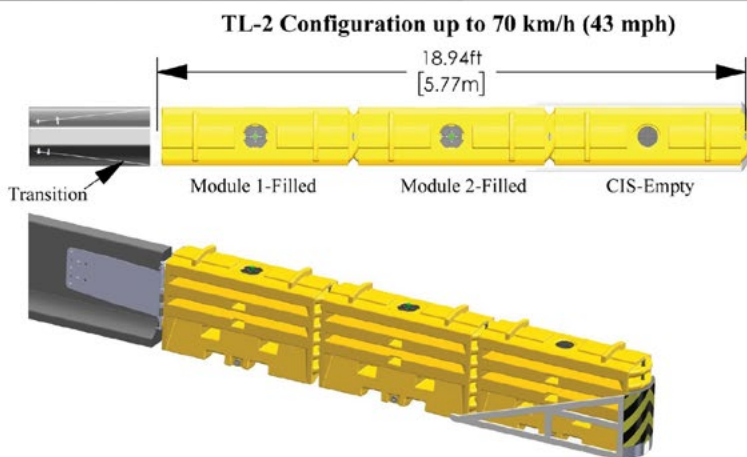
Approved by



# SLED End Terminal



## Speed Configuration



Please note: All systems require the front module to be empty.

# Rubber Guard Barrier



For every 500m of Rubber Guard Barrier produced, 92 tonnes of recycled tyres are used - equivalent to 15,300 passenger tyres.

The Rubber Guard Barrier was developed for non-tested applications such as internal worksites, low speed or offline sections of work areas that require separation for pedestrians or vehicles. These barriers also lend themselves to event management solutions, such as road closures.

Customers can rest assured that a project is contributing to reduced emissions when choosing Rubber Guard. The manufacturing process of Rubber Guard removes tyres from landfill, reducing emissions, whilst also saving on water wastage and pollution caused by filling and draining waste water from plastic water filled barrier options.

Saferoads Rubber Guard Barrier is superior to other barriers as the rubber increases the durability of the barrier. It will not crack or break, increasing its lifespan. It is efficient to deploy using a forklift, and does not need to be filled with water once on-site.

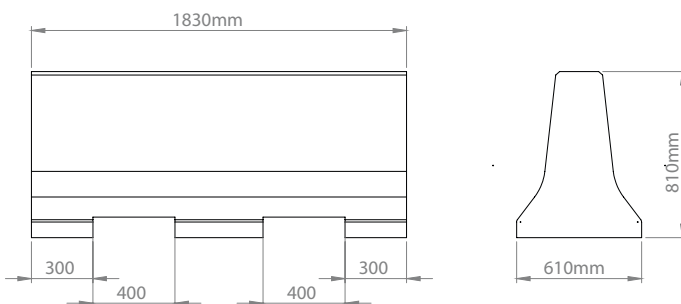
The Rubber Guard is a barrier manufactured using recycled rubber. Each barrier weighs approximately 400kg, made up of 85% recycled rubber crumb and 15% binder, recycling 56 passenger tyres per barrier.

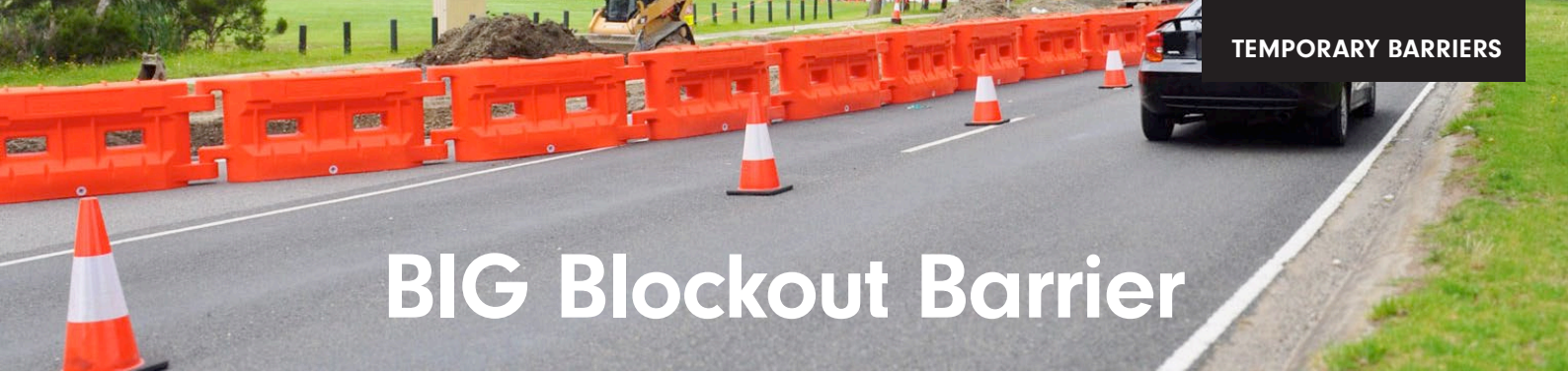
- ✓ **Manufactured locally using 85% recycled rubber crumb**
- ✓ Combats waste, reduces landfill emissions and contributes to a circular economy
- ✓ Fast, efficient deployment and retrieval
- ✓ Increased barrier lifespan
- ✓ Does not need to be filled with water, avoiding the need to dispose of waste water

## SPECIFICATIONS

<b>Length</b>	1.83m
<b>Height</b>	810mm
<b>Width</b>	610mm
<b>Weight</b>	400kg
<b>Weight Per Metre</b>	216kg
<b>Amount Transportable Per Semi Truck</b>	56 (stacked in two layers)

\*This is not a crash tested barrier. Please refer to [saferoads.com.au](http://saferoads.com.au) for the most up to date specifications

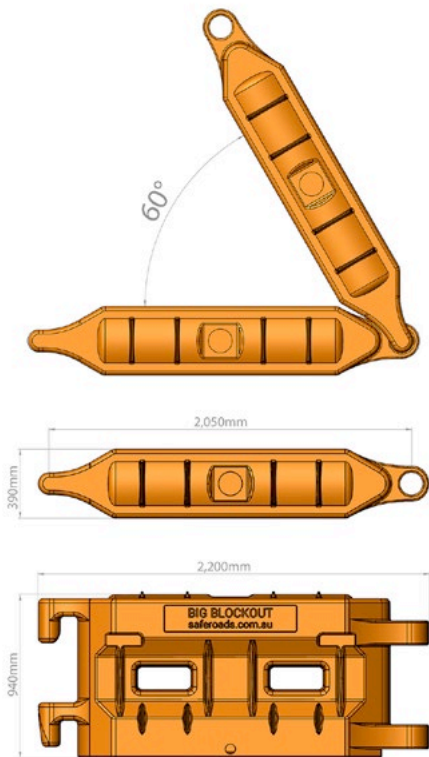




# BIG Blockout Barrier



Saferoads has developed a robust barrier system for non tested applications, including and not limited to site work, delineation, shielding or simply for lower speed and offline sections of work areas that require separation from pedestrians or ongoing traffic. These barriers are convenient to deploy and also lend themselves to event management applications, where fast deployment and retrieval is critical.



- ✓ **Australian designed and manufactured**
- ✓ Extra durable, robust, virtually indestructible!
- ✓ Highest quality plastic barriers available
- ✓ Segments are 2.2m in length
- ✓ Available in a range of bright colours for high visibility on-site
- ✓ 8mm wall thickness
- ✓ User friendly to stack
- ✓ Innovative tapered interlocking tabs are efficient to use
- ✓ Suitable for all environments
- ✓ Each join allows for 300 degree angling

## SPECIFICATIONS

<b>Product Code</b>	F1301709
<b>Height</b>	940mm
<b>Height of 2 stacked units</b>	1840mm
<b>Overall Length</b>	2200mm
<b>Installed Length</b>	2050mm
<b>Width</b>	390mm
<b>Weight (empty)</b>	38kg
<b>Weight (full)</b>	488kg
<b>Water Ballast</b>	450L
<b>Wall Thickness</b>	8mm

\*This is not a crash tested barrier. Please refer to saferoads.com.au for the most up to date specifications





# Security Bollards

---



Saferoads has been providing and improving public and road safety solutions for 30 years and security bollards play a huge role in this. We have developed the highest quality road safety bollards to protect pedestrians, including our latest portable bollards which are ideal for temporary installation at events. OmniStop bollards meet the technical specifications required by government road authorities such as VicRoads and Transport for NSW.







# OmniStop Super Duty



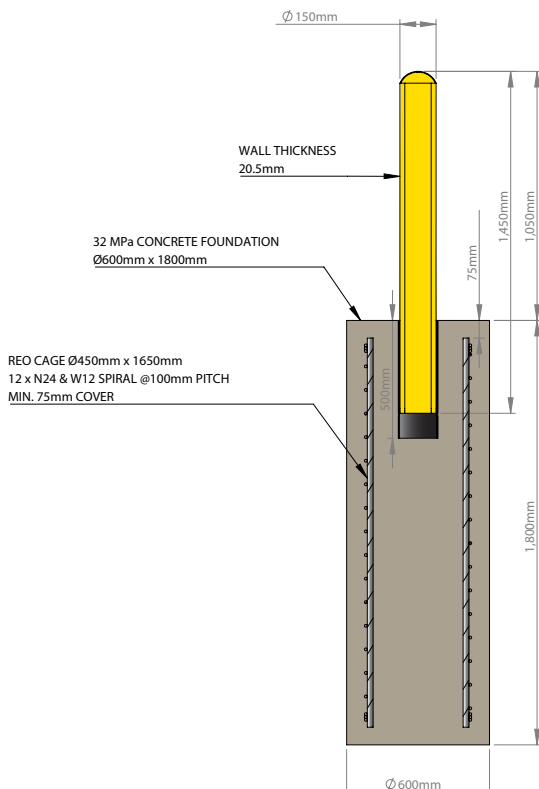
You can rely on OmniStop Super Duty to protect pedestrians and property from errant vehicles. This bollard is crash tested to ensure vehicle entry into a pedestrian dense area will be prevented. It offers an innovative solution to protect the public from terrorists and other errant vehicles without interference with pedestrian flow.

- ✓ Fully crash tested with a 2270kg vehicle at 50km/h
- ✓ Protects pedestrians, outdoor diners and assets
- ✓ Reduces the risk of injury to the vehicle's occupants
- ✓ Energy absorbing bollard
- ✓ Allows pedestrian flow
- ✓ Easy installation
- ✓ Easily replaced post impact
- ✓ Affordable

## SPECIFICATIONS

Product code	K1208000		
Specifications	Bollard Only	Sleeve	Reo Cage
<b>Diameter</b>	150mm/6in	155mm/6.1in I.D 165mm/6.5in O.D	450mm/17in
<b>Length</b>	1450mm/57in	500mm/20in	1650mm/65in
<b>Weight</b>	94kg/207lbs		113kg/249lbs
<b>Footing</b>	600Ø x 1800mm		
<b>Vehicle Stopped</b>	 Hatchback		 Sedan
	 SUV		 Pick up
<b>Crash Tested</b>	ASTM F3016 2270kg/5000lb vehicle at 50kmh/30mph		

\*Please refer to [saferoads.com.au](http://saferoads.com.au) for the most up to date specifications





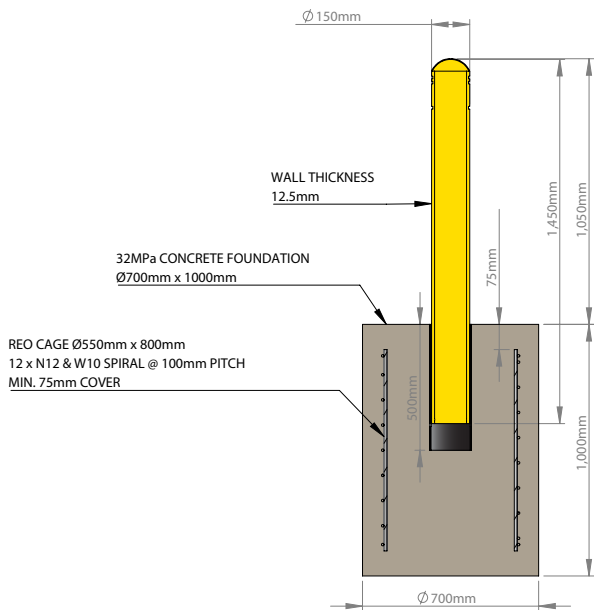
# OmniStop Ultra

The OmniStop Ultra stops vehicles in their tracks. It is designed to control errant vehicles weighing up to 1600kgs. This bollard is crash tested and can be relied upon to reduce the amount of damage that occurs when an errant vehicle attempts to enter a pedestrian dense area.

It offers an innovative solution to protect the public from terrorists and errant vehicles, without interfering with pedestrian flow.



- ✓ Fully crash tested with a 1600kg vehicle at 60km/h
- ✓ Protects pedestrians, outdoor diners and assets
- ✓ Reduces the risk of injury to the vehicle's occupants
- ✓ Energy absorbing bollard
- ✓ Allows pedestrian flow
- ✓ Easy installation
- ✓ Easily replaced post impact
- ✓ Affordable
- ✓ Available in a range of colours, white, yellow, black, grey, stainless steel or customised to suit your project



## SPECIFICATIONS

Specifications	Bollard Only	Sleeve	Reo Cage
<b>Diameter</b>	150mm/6in	155mm/6.1in I.D 165mm/6.5in O.D	550mm/21in
<b>Length</b>	1450mm/57in	500mm/20in	800mm/31in
<b>Weight</b>	67.5kg/149lbs		34kg/75lbs
<b>Footing</b>	700Ø x 1000mm		
<b>Vehicle Stopped</b>	 Hatchback SUV		 Sedan Pick up
<b>Crash Tested</b>	1600kg/3500lb vehicle at 60kmh/38mph		

\*Please refer to [saferoads.com.au](http://saferoads.com.au) for the most up to date specifications.

Approved by Transport for NSW and DOT - Victoria up to 50km/h



# Lockable Bollard

Bollards are designed to deter vehicles from pedestrian dense areas or private property. Whether it's outdoor dining, strip shopping, or simply a footpath or bus stop, our steel bollards are a great option to encourage drivers to avoid an area.

Our safety bollards can be manufactured in two metal options, to ensure the best material for your application, and then finished in a colour of your choice. We offer a number of different cap options and post colours to achieve maximum visibility!







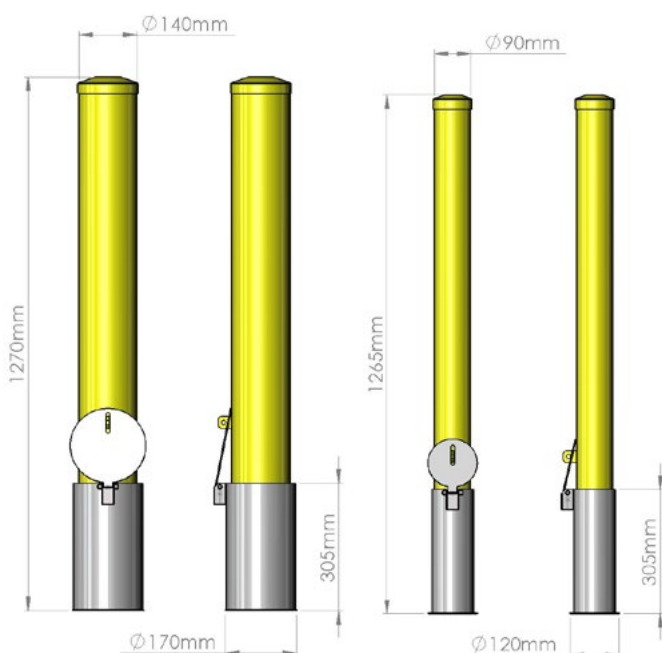
- ✓ Galvanised or steel options available
- ✓ Various colours available
- ✓ Cap options include rain cap and flat cap

## SPECIFICATIONS

<b>Products</b>	140mm	90mm
<b>Diameter (Cap)</b>	140mm	90mm
<b>Diameter (Sleeve)</b>	170mm	120mm
<b>Height</b>	1270mm	1265mm
<b>Height (Sleeve)</b>	1270mm	305mm

## BOLLARD PRODUCTS AVAILABLE

Product Name	Product Name	Product Code
	Lockable Bollard 140mm (white)	K1202109
	Lockable Bollard 140mm (yellow)	K1202109
	Lockable Bollard 90mm (white)	K1202113-10
	Lockable Bollard 90mm (yellow)	K1202113-10



\*This is not a crash tested bollard. Please refer to [saferoads.com.au](http://saferoads.com.au) for the most up to date specifications.

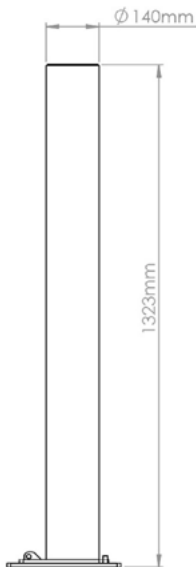
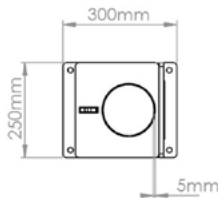


# SlipLoc Bollard

Saferoads' bollards are designed to deter vehicles from pedestrian dense areas or private property. Perfect for use by councils, the SlipLoc Bollard can be easily installed and removed by one person making it a great option for limited access sites. These bollards can be used to secure an area quickly, with virtually no disruption to works, public or traffic. Whether it's outdoor dining, strip shopping or simply a footpath or bus stop, our steel safety bollards are a great option to encourage drivers to avoid an area.

Custom delineation and colours available for bulk quantities.

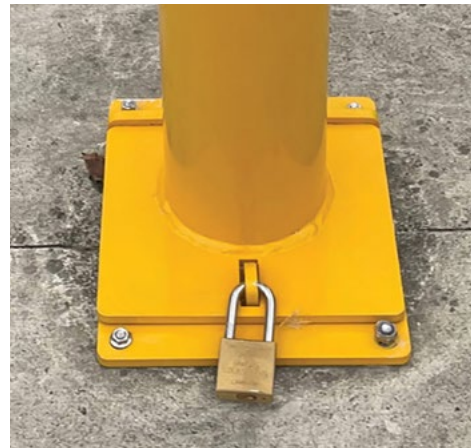
- ✓ Easily removable
- ✓ Can be padlocked for extra security
- ✓ 2-Pac yellow paint for high visibility
- ✓ Easy 10 minute install
- ✓ Fully galvanised
- ✓ No destructive core drilling into paths or walkways



## SPECIFICATIONS

<b>Products Code</b>	<b>K1202109-MBL</b>
<b>Diameter (Cap)</b>	140mm
<b>Base</b>	250mm x 300mm
<b>Height (including cap)</b>	1323mm

\*This is not a crash tested bollard. Please refer to [saferoads.com.au](http://saferoads.com.au) for the most up to date specifications.



**Over 30 years'  
experience  
in the public  
safety industry.**





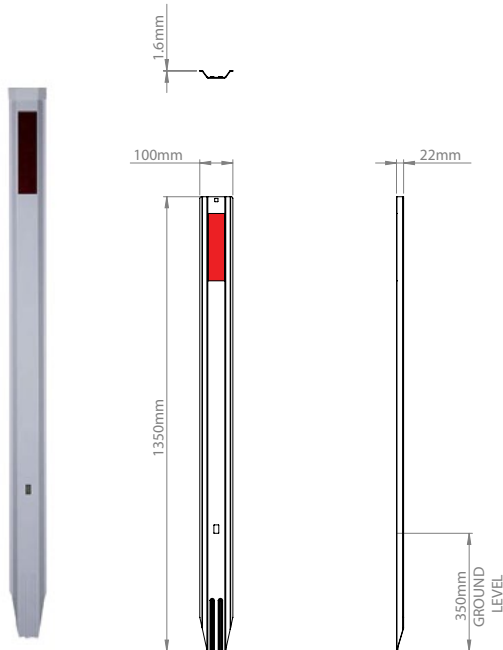
# Guide Posts

---



Saferoads began 30 years ago with the invention of our rubber hinge guide post. During this time, we have developed a range of guide post options designed to meet different needs. You can be sure that no one knows guide posts as well as we do.

# SupaSteel Guide Post



The SupaSteel Guide Post offers the sharpest point of any steel guide post making it quick and easy to install and remove, either manually or with power drivers.

As the strongest semi-flexible steel post available, the SupaSteel comes with a 5 year warranty, will withstand multiple impacts, and can be re-straightened over 15 times whilst remaining rigid. This means significant replacement cost savings.

A depth mark hole acts as both the hinge for the pole to bend when impacted, as well as allowing for easy removal in the event of the post being relocated. Plastic safety caps are also available, which clip onto the top of the post.

Manufactured from premium steel, galvanised, pre-treated and then powder coated to comply with all Australian Guide Post specifications.

- ✓ Super strong!
- ✓ Can be re-straightened over 15 times whilst remaining rigid, avoiding substantial replacement costs
- ✓ Reflective Class 1A Delineator, 50 x 200mm rectangle
- ✓ Easy to install - sharpest point of any steel guide post, aiding the installation process
- ✓ Ideal for installation in all ground types
- ✓ Will drive straight into bitumen and chip seal surfaces
- ✓ 5 year product warranty

## SPECIFICATIONS

<b>Product Code</b>	<b>F1102140</b>
<b>Height</b>	1350mm
<b>Width</b>	100mm
<b>Thickness</b>	1.6mm
<b>Weight</b>	2kg
<b>Installation</b>	Easily installed manually or with power drivers
<b>Mount</b>	Steel
<b>Rebounds after impact from any direction</b>	Can be bent and straightened back into shape a minimum of 15 times

\*Please refer to [saferoads.com.au](http://saferoads.com.au) for the most up to date specifications



# SnapLoc Guide Post



The SnapLoc Guide Post offers the ultimate in durability and flexibility as well as ease of installation. The unique urethane hinge will bend and self-correct the post when impacted from any direction. Our SnapLoc Guide Posts come with a 5-year warranty and are shatter and crack resistant.

- ✓ Rebounds after vehicle impact
- ✓ Recessed Class 1A delineator, 50 x 200mm rectangle
- ✓ Ultimate in durability
- ✓ Will outlast competitors - does not shatter or crack
- ✓ Easy to install with a jack hammer
- ✓ Unique urethane hinge will bend and self correct the post when impacted from any direction
- ✓ 5 year product warranty
- ✓ Withstands multiple impacts

## TWO PIECE MODEL

- ✓ Easily removable with tool
- ✓ Offers multiple options for ground mounting
- ✓ Wheel over surface mount option
- ✓ Galvanised steel bridge mount

## ONE PIECE MODEL

- ✓ Star picket one piece socket

## SPECIFICATIONS

Product Code	Two Piece F110202Y One Piece F1102135
Height	1000mm
Width	115mm
Thickness	30mm
Weight	Two Piece - 1.5kg including socket (315mm) One Piece - 1.6kg with star picket socket
Installation	Under 30 Seconds
Mount	Multiple Mount Options Available
Hinge	Durable, 100% Urethane

\*Please refer to [saferoads.com.au](http://saferoads.com.au) for the most up to date specifications

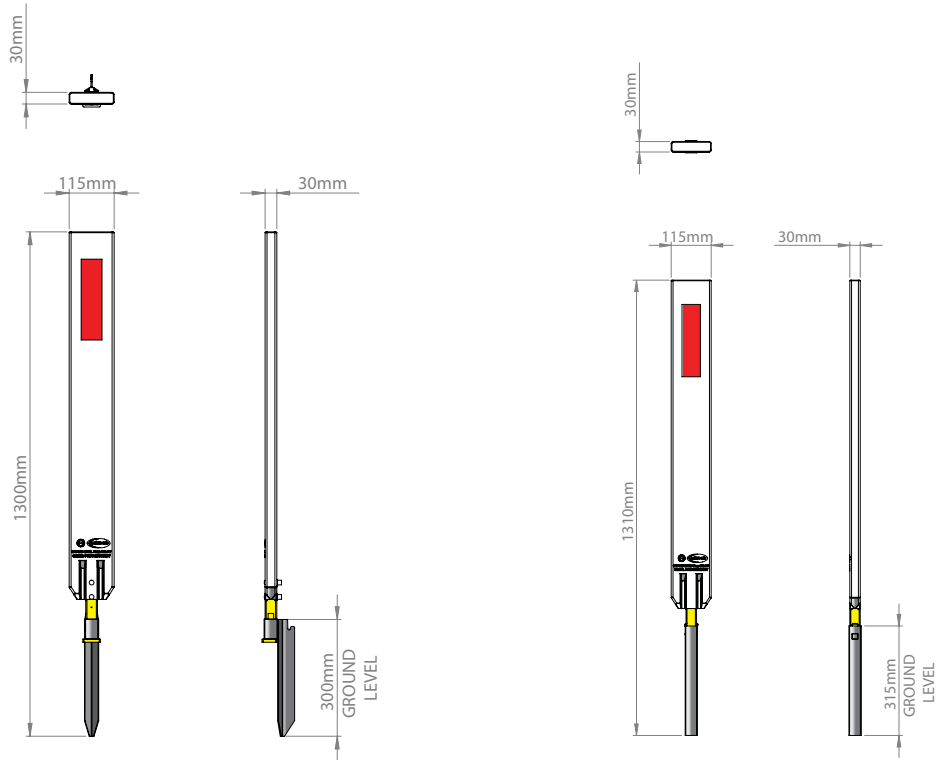


Approved by



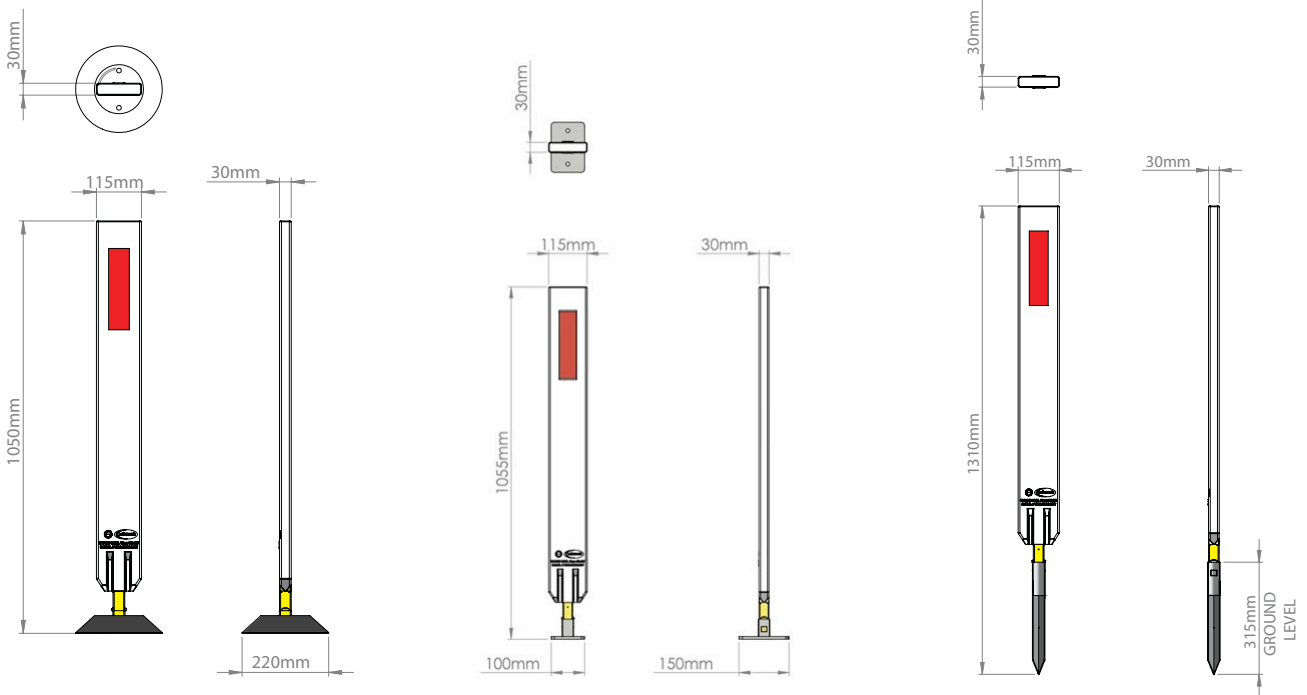


# SnapLoc Guide Post



**One Piece**

**Two Piece  
Ground Socket**



**Two Piece  
Surface Mount Base**

**Two Piece  
Bridge Mount Base**

**Two Piece  
Spike Base**



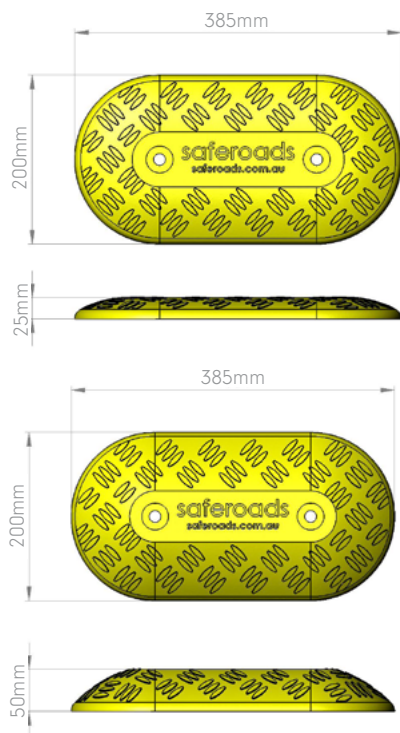
# Traffic Calming

---



Traffic calming is the installation of safety solutions, such as speed reduction humps or portable rumble strips, to slow, deter or redirect traffic. Traffic calming devices aim to encourage safer, more responsible driving in changing and risky conditions.

# Rumble Bars



Rumble Bars are surface mounted units that provide a visual and audible warning to deter motorists from certain areas or hazardous conditions. Suitable for centre line, median, edge marking and line marking traffic islands, our rumble strip is easily installed and will not crack, chip or break like concrete or plastic.

Rumble Bars are constructed from rubber, making the units heavy duty and long wearing. They are built to last the most demanding traffic conditions. The rumble strip contours to the road surface, and can be fixed using epoxy, butyl or large coach screens and plugs.

- ✓ Surface mounted units
- ✓ Visual and audible warning to motorists
- ✓ Alert of hazardous/unexpected traffic conditions ahead
- ✓ Easily installed - can be bolted or epoxied in place
- ✓ Heavy duty and built to last
- ✓ Does not chip or crack like concrete
- ✓ Manufactured with recycled rubber and EPDM rubber
- ✓ Contour to road surface
- ✓ Low maintenance
- ✓ Checker plate finish
- ✓ Two profiles available: 25mm and 50mm
- ✓ Available in white and yellow

## SPECIFICATIONS

Product Code	K1042050	K1402054
	Low profile	High profile
Height	25mm	50mm
Length	200mm	200mm
Width	385mm	385mm
Weight	2kg	3kg
Colour	Yellow	Yellow
Finish	Checker Plate	Checker Plate

\*Please refer to [saferoads.com.au](http://saferoads.com.au) for the most up to date specifications

# Separation Kerb



Separation Kerb is designed to redirect or separate traffic, without needing excessive road width or expensive excavation.

Manufactured with rubber, Separation Kerb offers flexibility, superior durability and is low maintenance. It is also an effective lane divider and when hit, it returns to form and shape without tearing or cracking.

- ✓ Redirects traffic
- ✓ Unique interlink design allows segments to work around curves
- ✓ Does not take excessive road width
- ✓ Yellow rubber with yellow paint to limit visible wear and tear
- ✓ No expensive excavation/traffic control costs to apply a remedy treatment
- ✓ Superior durability
- ✓ Manufactured with recycled rubber and EPDM rubber
- ✓ Contours to the road surface
- ✓ Flexible nature allows a positive grip onto pavement
- ✓ Can be fastened for permanent applications or U Bolted together for temporary applications (if required)
- ✓ Ideal for redirecting traffic
- ✓ Easily installed and removed - ready for the next job
- ✓ Separation curb posts can be fitted to provide additional delineation
- ✓ 5 year warranty

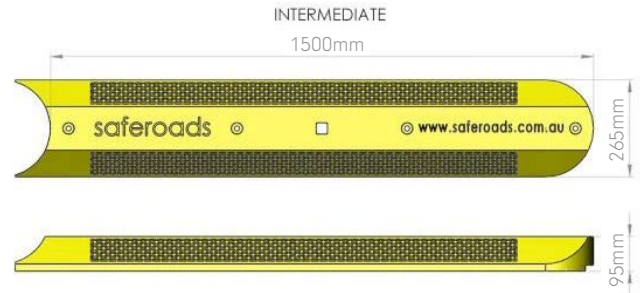


# Separation Kerb




## SPECIFICATIONS

Segments	Intermediate	Male End	Female End	Single
Product Code	K1401765	K1401766	K1401767	K1401768
Weight	29.5KG	24KG	24KG	18KG
Length	1500mm	1330mm	1330mm	1000mm
Width	265mm	265mm	265mm	265mm
Height	95mm	95mm	95mm	95mm

\*Please refer to [saferoads.com.au](http://saferoads.com.au) for the most up to date specifications



## SEPARATION KERB PRODUCTS AVAILABLE

	Product Name	Product Code
	Removal Tool	F1102120
	Joining Bracket (used for install instead of fasteners)	F1401754
	Separation Kerb Post	F1401753

# Caterpillar Safe Cycle



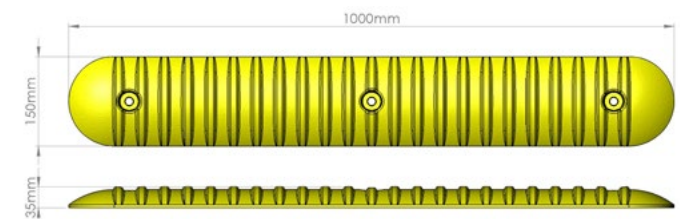
Saferoads' unique Caterpillar Safe Cycle divides bike lanes, alerting drivers if they are encroaching. Made from tough rubber, our bike lane delineator can be installed on any curves, crossings or junctions.

- ✓ Protects cyclists
- ✓ Visibly and audibly engages drivers to avoid bike lanes
- ✓ Safer for cyclists and motorists, with lower impact contour compared with other options on the market
- ✓ Manufactured with recycled rubber and EPDM rubber
- ✓ End caps built into the island design, so it can curve with roads as required
- ✓ Able to head in any direction without time consuming and unattractive joiners, due to spacing of 300mm between sections of Caterpillar

## SPECIFICATIONS

<b>Product Code</b>	<b>K1404000</b>
<b>Height</b>	35mm
<b>Width</b>	150mm
<b>Length</b>	1000mm
<b>Weight</b>	3.76kg

\*Please refer to [saferoads.com.au](http://saferoads.com.au) for the most up to date specifications. CAD files available for designers and specifiers.



# Rubber Wheel Stop



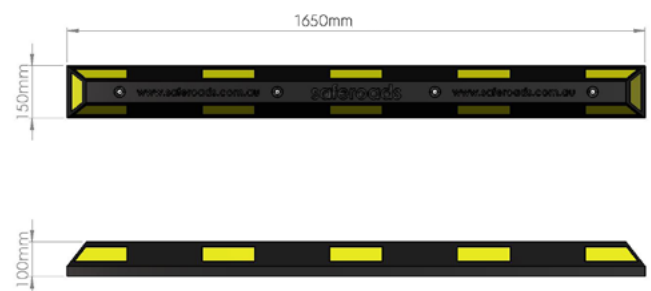
Say goodbye to concrete hazards in your parking bays damaging vehicles, becoming dislodged or cracking. Saferoads' Rubber Wheel Stop is manufactured from recycled rubber and comes with highly reflective yellow markings for better visibility. It's easily installed in minutes and ready for immediate use - a carpark feature users will definitely appreciate.

- ✓ No more damaged vehicles!
- ✓ Will not dislodge or crack
- ✓ Safe for motorists and pedestrians
- ✓ Manufactured from recycled rubber
- ✓ Highly visible
- ✓ Installed in minutes - no OH&S issues
- ✓ Ready for immediate use
- ✓ Cost effective alternative to asphalt or concrete

## SPECIFICATIONS

<b>Product Code</b>	<b>K1402000</b>
<b>Height</b>	100mm
<b>Width</b>	150mm
<b>Length</b>	1650mm
<b>Weight</b>	15kg
<b>Colour</b>	Black & Yellow

\*Please refer to [saferoads.com.au](http://saferoads.com.au) for the most up to date specifications



# Rubber Speed Humps



One of the best ways to slow and control traffic is with Rubber Speed Humps. If you need to slow drivers down as they enter and exit car parks and other facilities, Rubber Speed Humps are an ideal option. Available in both low profile (50mm) and Australian standard (75mm).

- ✓ Engages the driver to reduce speed
- ✓ Quick and easy to install
- ✓ Minimal driver discomfort for the 50mm high model
- ✓ Durable and built to last
- ✓ Cost effective alternative to asphalt or concrete
- ✓ Reduce speed, accidents and noise
- ✓ Cable/hose protector for temporary applications
- ✓ Four fasteners per segment to prevent dislodging or cracking
- ✓ Manufactured from high quality recycled rubber
- ✓ Highly visible
- ✓ Installed in minutes - minimal disruptions
- ✓ Suitable for delineating tram lines
- ✓ Ready for immediate use
- ✓ 75mm height complies with Australian Standards





# Rubber Speed Humps

## SPECIFICATIONS

### Low Profile (50mm)

Designed to reduce speed to 20km/h or less

	Intermediate (Pair)	End Cap (Pair)
		
<b>Code</b>	<b>K1401950</b>	<b>K1401952</b>
<b>Height</b>	50mm	50mm
<b>Width</b>	350mm	350mm
<b>Length</b>	1m (500mm Black & 500mm Yellow)	500mm
<b>Weight</b>	6.5kg	7kg
<b>Colour</b>	Black & Yellow	Yellow

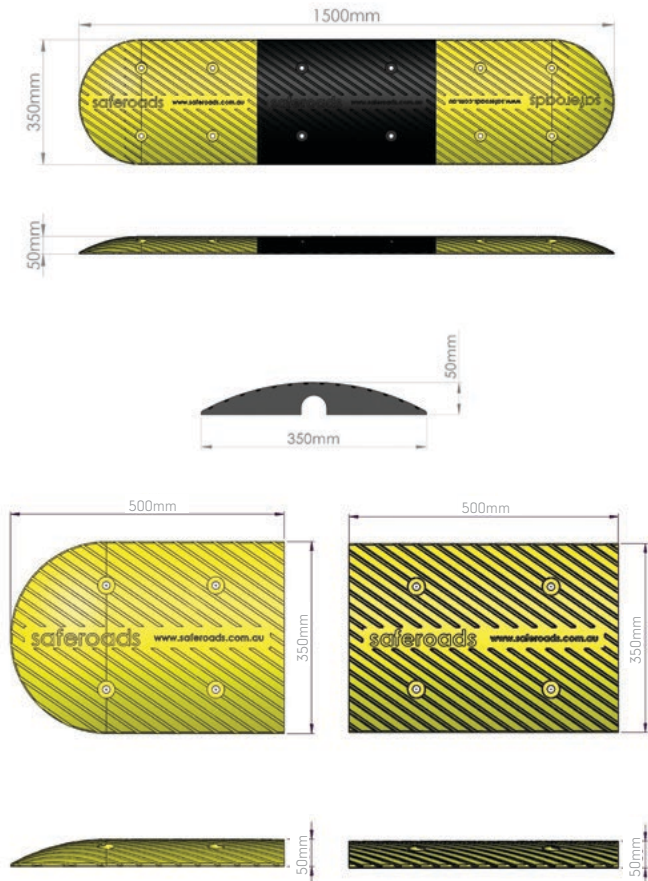
\*Please refer to saferoads.com.au for the most up to date specifications

### Australian Standards Compliant (75mm)

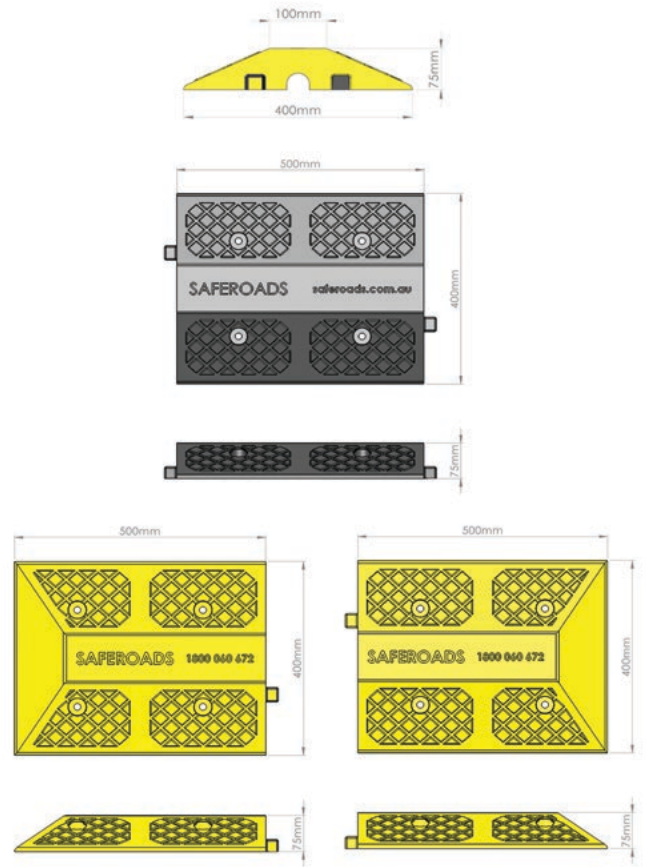
Designed to reduce speed to 5km/h or less

	Intermediate	End Cap (Pair)
		
<b>Code</b>	<b>K1402708 or K1402710</b>	<b>K1402709 or K1402711</b>
<b>Height</b>	75mm	75mm
<b>Width</b>	400mm	400mm
<b>Length</b>	500mm	500mm
<b>Weight</b>	11.5kg	10.5kg
<b>Colour</b>	Black or Yellow	Black or Yellow

### Low Profile (50mm)



### Australian Standard (75mm)





# Rubber Kerbing



Rubber Kerbing that does not crack, chip or breakaway. It is cost effective and very quick to install. It can be used in many applications, providing medium to long term traffic management and can also be removed if required for annual street parades, cycle races and car races.

Rubber Kerbing is available in two popular profiles, the Semi Barrier, and Semi Mountable. It is manufactured with white EPDM rubber. Unlike concrete kerbing, rubber kerbing is resistant to greying from road grime over time and does not require constant maintenance to maintain its visibility.



- ✓ Absorbs vehicle impacts
- ✓ Does not crack, chip or breakaway
- ✓ Cost effective
- ✓ Quick to install
- ✓ Easy to remove if required
- ✓ Maintenance free
- ✓ Resistant to greying from road grime
- ✓ Made with white EPDM rubber
- ✓ Custom made to suit your requirements - send us your plans!



## SPECIFICATIONS

Profile	Semi Mountable	Semi Barrier
Height	125mm	150mm
Width	230mm	150mm
Length	1.0m	1.0m
Weight	16.5kg	15.5kg
Colour	White	White
Radius	300, 600 & 1200mm	300, 600 & 1200mm

\*Please refer to [saferoads.com.au](http://saferoads.com.au) for the most up to date specifications

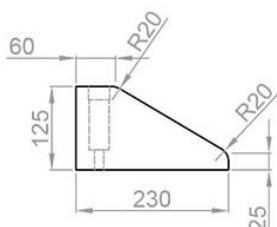
Product is custom designed to suit your needs. Call Saferoads today for a free consultation with our experienced solution managers.

# Rubber Kerbing

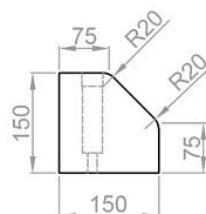
## Cross Sections

Please note: Cross sections are twice the scale for clarity

**Mountable**



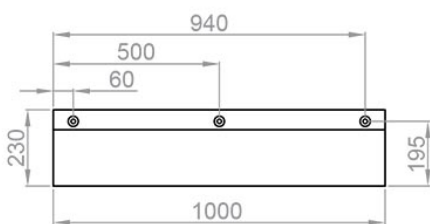
**Barrier**



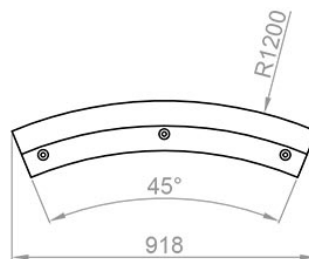
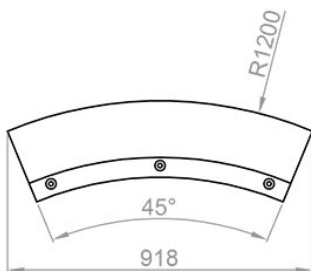
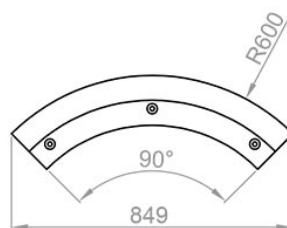
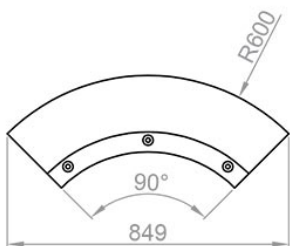
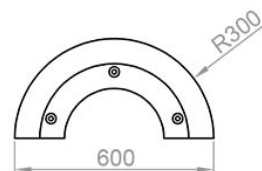
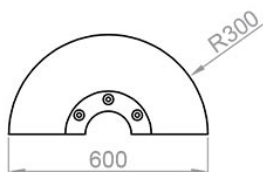
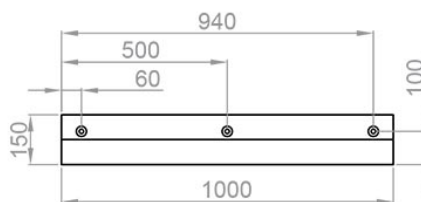
## Standard Pieces

Pieces can be cut to suit your design

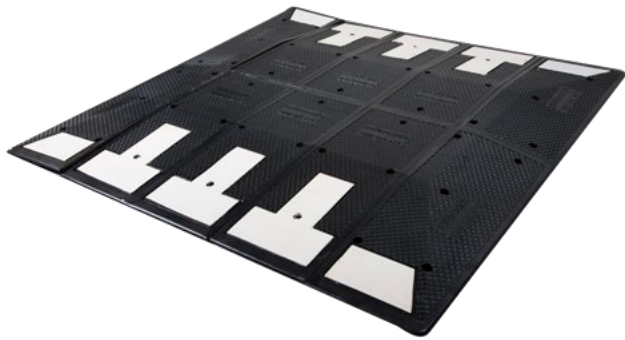
**Mountable**



**Barrier**



# Rubber Speed Cushions



Speed Cushions provide a road safety system that engages the driver to reduce speed while at the same time causing minimal driver discomfort.

With a unique modular design that offers high levels of flexibility, our Rubber Speed Cushions are the ideal solution for any application.

We've developed a rubber specification for speed cushions which we believe is the very best available, ensuring durability and longevity of the product - in addition to reducing speed, accidents and noise wherever they're used.



- ✓ Engages the driver to reduce speed
- ✓ Quick and easy to install
- ✓ Minimal impact to buses and emergency vehicles
- ✓ Minimal driver discomfort
- ✓ Unique modular design
- ✓ Greater flexibility
- ✓ Correct size and profile for every situation
- ✓ Will suit any road
- ✓ Various widths allow for a tailored design
- ✓ Durable
- ✓ Manufactured from recycled rubber
- ✓ Ability to remove and relocate if required
- ✓ Cost effective
- ✓ Reduce: Speed, Accidents and Noise
- ✓ Can be custom designed to any size above 2m (in 100mm increments)

## SPECIFICATIONS (Most popular sizes)

Product Code	K1401300	K1401301	K1401302	K1401303	K1402122
Width	1.6m	1.7m	1.8m	1.9m	2m
Height	75mm	75mm	75mm	75mm	75mm
Length	2m	2m	2m	2m	2m

\*Please refer to [saferoads.com.au](http://saferoads.com.au) for the most up to date specifications

Product is custom designed to suit your needs. Call Saferoads today for a free consultation with our experienced solution managers.



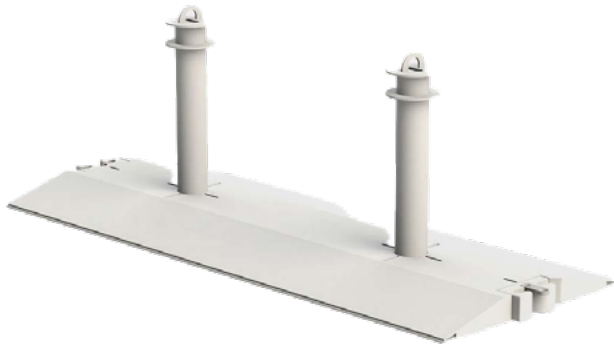
# Vehicle Mitigation

---



Major events take place throughout Australia every year and draw huge crowds of people which can be a target for terrorism as well as being difficult to evacuate in case of other emergencies. The Rapid Stop Barrier is the perfect solution; it stops vehicles in their tracks and is fully portable. It offers event managers an innovative way to protect the public from terrorists and errant drivers, without interfering with pedestrian activity.

# Rapid Stop Barrier



Innovative and unique, Rapid Stop Barrier has been designed to offer superior protection for events and work zones. Designed to stop out of control vehicles and protect passers-by, they are a must for hostile vehicle protection and event security.

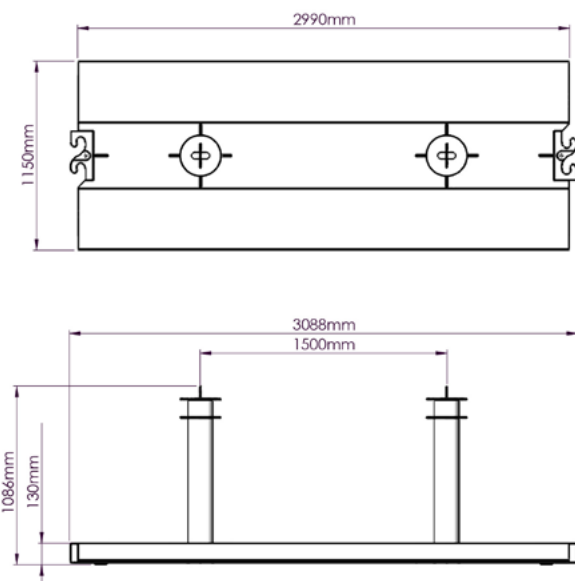
Rapid Stop Barrier is a completely freestanding, modular system that stops intentional and accidental vehicle intrusion into crowded areas, whilst not restricting pedestrian access in and out of an area.





The flexible nature of the Rapid Stop Barrier makes it the perfect solution for applications where conventional longitudinal barrier systems are not practical. The system is efficient to transport and deploy and does not require anchoring.



- ✓ Portable protection for pedestrian dense areas, events and worksites
- ✓ Proven to safely stop vehicles impacting from any angle
- ✓ Allows for pedestrian movement
- ✓ Fully crash tested with a 2270kg vehicle at 60km/h (MASH compliant)
- ✓ Non-lethal to occupants of impacting vehicle

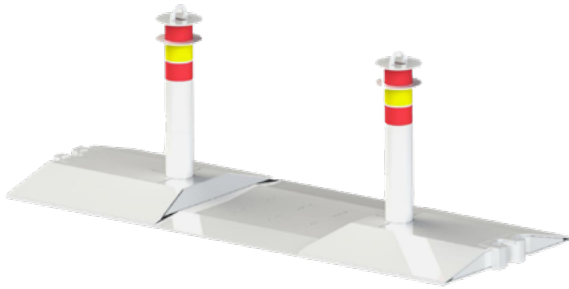
## SPECIFICATIONS



<b>Installed length</b>	3000mm
<b>Unit length</b>	3088mm
<b>Unit width</b>	1150mm
<b>Unit height (bollard)</b>	1086mm
<b>Unit height (base)</b>	130mm
<b>Weight</b>	1250kg
<b>Footing</b>	Freestanding no footing requirements
<b>Vehicles Stopped</b>	<div style="display: flex; justify-content: space-around;"> <div style="text-align: center;">  Hatchback             </div> <div style="text-align: center;">  Sedan             </div> </div> <div style="display: flex; justify-content: space-around; margin-top: 10px;"> <div style="text-align: center;">  SUV             </div> <div style="text-align: center;">  Pick up             </div> </div>
<b>Crash Tested</b>	ASTM F3016 2270kg/5000lb vehicle at 60km/h/30mph

\*Please refer to [saferoads.com.au](http://saferoads.com.au) for the most up to date specifications

# Rapid Stop Disabled Access



Rapid Stop Barrier Disabled Access module is unobtrusive, and the low profile ramp allows access for wheelchairs and prams.

The inclusion of the Disabled Access module ensures an event is inclusive and accessible to everyone, whilst maintaining maximum security and prevention of unauthorised vehicle entry.


The Disabled Access modules should be strategically placed in a deployment of Standard barriers to allow for wheelchair access throughout the system.

- ✓ Portable protection for pedestrian dense areas, events and worksites
- ✓ Low profile ramp allows for easy access for wheelchairs and prams
- ✓ Proven to safely stop vehicles impacting from any angle
- ✓ Fully crash tested with a 2270kg vehicle at 60km/h (MASH compliant)


## SPECIFICATIONS

<b>Installed length</b>	3000mm
<b>Unit length</b>	3088mm
<b>Unit width</b>	1150mm
<b>Unit height (bollard)</b>	1086mm
<b>Unit height (base)</b>	130mm
<b>Weight</b>	1040kg
<b>Footing</b>	Freestanding no footing requirements


**Vehicles Stopped**



Hatchback



Sedan



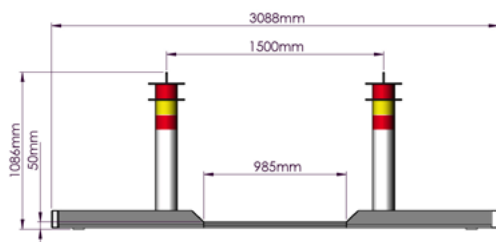
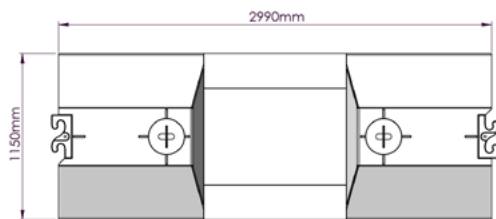
SUV



Pick up

<b>Crash Tested</b>	ASTM F3016 2270kg/5000lb vehicle at 60km-h/30mph
---------------------	--

\*Please refer to [saferoads.com.au](http://saferoads.com.au) for the most up to date specifications



# Rapid Stop Emergency Access

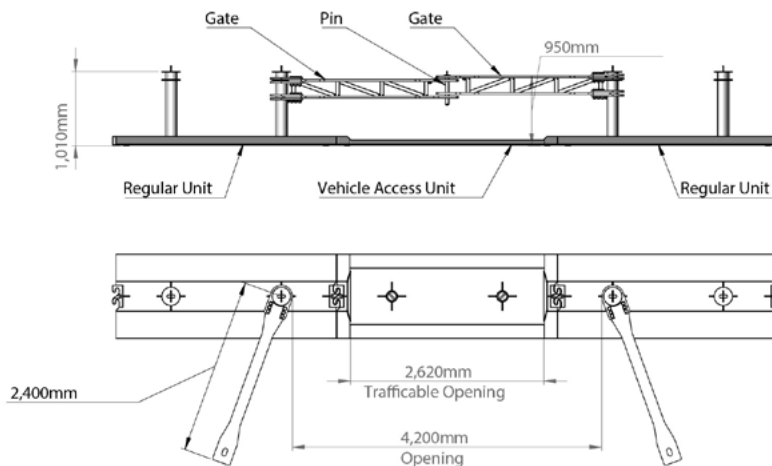


The Rapid Stop Barrier Emergency Access Gate allows for fast entry of emergency vehicles. With pedestrian safety front of mind, the system will not slow the entry or exit of large crowds, whilst enabling the timely access of emergency vehicles as required.

The Rapid Stop Emergency Access Gate can be placed between a minimum of two standard barriers, for a continuous barrier that has a 4.2m gate opening, simplifying emergency services ingress and egress.



- ✓ Portable protection for pedestrian dense areas, events and worksites
- ✓ Allows for easy ingress and egress of emergency vehicles
- ✓ Proven to safely stop vehicles impacting from any angle
- ✓ Fully crash tested with a 2270kg vehicle at 60km/h (MASH compliant)



## SPECIFICATIONS

### Vehicle Access Module

Installed length	3000mm
Unit length	3088mm
Unit width	1150mm
Unit height (bollard)	130mm
Weight	930kg

### Gate Assembly

Installed length	9000mm
Unit width	1150mm
Weight (assembly)	3900kg
Gate arm (each)	230kg
Gate retaining pin	7kg

### Footing

Freestanding no footing requirements

### Vehicles Stopped



Hatchback



Sedan



SUV



Pick up

### Crash Tested

ASTM F3016 2270kg/5000lb vehicle at 60kmh/30mph

\*Please refer to [saferoads.com.au](http://saferoads.com.au) for the most up to date specifications





# Case Studies

---





# Coomera Connector Project Gold Coast, QLD

Featuring HV2 Barrier

## PROJECT BRIEF

The Coomera Connector is a future state-controlled transport corridor designed to run between Loganholme and Nerang, situated east of the Pacific Motorway (M1) and the heavy train line. This new road aims to alleviate congestion on the M1 and support the growing residential and business communities in the northern Gold Coast and neighbouring Logan areas.

In late 2023, during the early stages of traffic management and design for the Coomera Connector Project (central), Fulton Hogan Hull McIlwain Joint Venture (FHHMJV) sought a unique barrier solution. The project brief specified a requirement for a minimum TL-4 barrier system with low deflections and no pinning, which directed attention to Saferoads HV2 Barrier.

Upon engaging with the Coomera Connector project team, it became evident that the Saferoads HV2 Barrier was an excellent fit. The HV2 Barrier not only satisfied the brief's requirements but also offered additional benefits including a compact footprint, ease of deployment, and cost-effective transportation.

Detailed discussions with FHHMJV stakeholders helped refine the performance criteria for the barrier along the Gold Coast Hwy in Helensvale. To ensure the HV2 Barrier met these specific needs, Saferoads Engineering Manager, Casey McMaster, conducted simulations using LS-DYNA software. These simulations tested the barrier's performance with a 10-tonne truck impacting at 15 degrees and 70 km/h, showing a deflection of just under 1.1 metres.

## HV2 BARRIER

- ✓ ASBAP approval to 100km/h
- ✓ Successfully tested to MASH TL-4
- ✓ Superior deployment and retrieval
- ✓ Economical to transport
- ✓ 450mm footprint
- ✓ 1.47m TL-3 deflection



## OUTCOME

By mid-2024, nearly 500 metres of HV2 Barrier were successfully installed. The deployment, carried out during a 6 hour night shift, proceeded smoothly thanks to FHHMJV's excellent coordination and the tireless efforts of the traffic team, who ensured both efficient site access and effective safety measures.

The HV2 Barrier's successful integration into the Coomera Connector Project highlights its effectiveness in meeting stringent safety requirements and operational efficiency, contributing significantly to the projects progress and safety standards.

## TESTIMONIAL



"We were very pleased at the speed and precision of the deployment and the efforts of the 3-person team to install with such efficiency, ease and expertise."

Arskcar Suurland - Site Superintendent - Fulton Hogan





# Parkes Special Activation Precinct

Featuring Roadway Solar V-LED Lights

## PROJECT BRIEF

JLE Group are a reputable electrical contracting company that values safety, quality and customer satisfaction. They required a solar lighting product that offered simple installation, exceptional light output and increased battery storage for a large industrial precinct project in Central NSW.

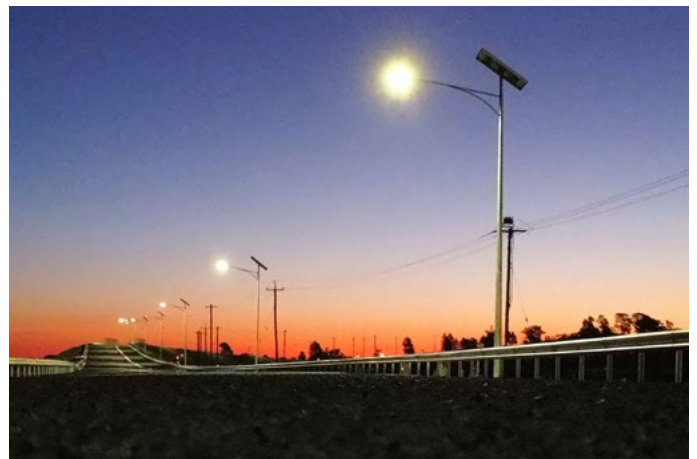
As Australia's first UNIDO Eco-Industrial Park, the Parkes Special Activation Precinct covers an area of 4,800 hectares. From here, at the only junction of Australia's two rail spines, the Inland Rail and the Trans-Australian Railway, suppliers can access up to 80 per cent of Australia's population within 12 hours by road or rail. This industrial area is quite unique. It not only allows the delivery of local products across Australia and around the world, it offers sustainability solutions for businesses, including waste and water reuse, efficient energy generation and solar lighting.

## ROADWAY SOLAR V-LED LIGHT

- ✓ 75W Australian approved V-LED
- ✓ 320W solar panel
- ✓ Built-in lithium-ion batteries
- ✓ Heavy duty aluminium frame

## OUTCOME

Saferoads Roadway Solar Lights were chosen for this project as they have been designed to offer a powerful spread of bright light throughout the night, and include improved technology in solar panels, batteries and LEDs. Roadway Solar Lights are simple to install and do not require deep cycle gel batteries which need to be buried in the ground. These solar lights have the battery storage to run at full capacity for several days, even in the case of inclement weather.





# Department of Transport Yarra Blvd, Victoria

Featuring OmniStop Super  
Duty Security Bollards

## PROJECT BRIEF

The Department of Transport (DoT) approached Saferoads to address a critical safety issue on Yarra Boulevard in Kew, Victoria. This stretch of road had a history of severe accidents due to its steep terrain and hazardous drop-off. To improve safety, it was essential to implement a roadside solution that would protect both pedestrians and vehicles. The chosen bollard needed to withstand impacts from a range of passenger vehicles and fit within specific site constraints.

## OUTCOME

Saferoads recommended the OmniStop Super Duty Bollards for this project. These bollards are crash-tested and engineered to stop vehicles weighing up to 2,270 kg, ensuring maximum protection. The compact design allowed for installation close to the roadside kerb without impeding pedestrian movement. During the selection process, our engineering team reviewed risk assessments provided by DoT, considering the site's numerous constraints. Casey McMaster, Engineering Manager at Saferoads, explained, "The 1.8 metre deep foundations of the Super Duty Bollards were chosen as they presented a lower risk of damaging the nearly vertical, 100-year-old bluestone block retaining wall located less than two metres from the bollard array."

The installation of OmniStop Super Duty Bollards has been highly successful. The bollards were delivered and installed efficiently, providing effective crash protection for both drivers and pedestrians. This solution met the project's unique requirements and significantly enhanced safety in this hazardous area, reflecting Saferoads' commitment to delivering high-quality site-specific safety solutions.

## OMNISTOP SUPER DUTY SECURITY BOLLARDS



- ✓ Fully crash tested with a 2270kg vehicle at 50km/h
- ✓ Protects pedestrians, outdoor diners and assets
- ✓ Reduces the risk of injury to the vehicle's occupants
- ✓ Energy absorbing bollard



## TESTIMONIAL



"Saferoads provided a great all-round product with installation support and design support. Modifications were required to be made on site to suit the tight fit and this was completed in a timely manner. Saferoads were of great assistance to repair damage to bollards prior to handover."

Cameron Beattie, Project Manager - Fulton Hogan





# Ventia Biggera Waters, QLD

Featuring Separation Kerb

## PROJECT BRIEF

Ventia, a valued customer of Saferoads, required 300 metres of Separation Kerb for a project at Biggera Waters in Queensland. A length of this kerb needed to be installed over a bridge where traditional drilling methods were not feasible, as they could potentially damage the bridge surface. An alternative fastening method was necessary to ensure a secure installation without compromising the integrity of the bridge.

## SEPARATION KERB

- ✓ Redirects traffic
- ✓ Unique interlink design allows segments to work around curves
- ✓ Does not take excessive road width
- ✓ Manufactured with recycled rubber and EPDM rubber
- ✓ Yellow rubber with yellow paint to limit visible wear and tear



## TESTIMONIAL



"The Butyl Pads and the separation kerbs are still intact, and there have been no damages or issues. We are impressed with the product"

Ritvej Machchhar - Site Engineer, Ventia



## OUTCOME

Saferoads proposed the use of butyl adhesive pads for the installation of the Separation Kerb. This solution was decided upon, following previous experience with similar projects, where rubber products had effectively been adhered to surfaces using butyl pads. These pads provided a fast, reliable method to attach the rubber base of the Separation Kerb to the concrete and asphalt bridge surfaces. The butyl adhesive pads are permanently flexible, allowing the Separation Kerb to withstand impacts without detaching from the surface. Additionally, the flexible design of the Separation Kerb included short lengths (2.66 metres) of male and female sloped end pieces, which facilitated water drainage through the gaps between installed segments. This design feature not only ensured effective water management but also maintained cost-efficiency. The Separation Kerb system can also be fitted with flexible delineation posts, allowing for adjustable placement to keep vehicles within their lanes, particularly in critical areas.

Saferoads provided detailed specifications for the placement of the butyl pads and installation procedures, enabling Ventia to install the Separation Kerb successfully. Nearly a year later, this installation is recognised as a significant success, delineating lanes between cyclists and motorists and demonstrating the efficacy of the chosen solution.





# Victoria's Big Build North East Link

Featuring Rubber T-lok Barrier

## PROJECT BRIEF

As part of Victoria's Big Build, the 6.5km North East Link Tunnels from Watsonia to Bulleen will fix the missing link in the city's freeway network, take 15,000 trucks off local roads a day and reduce travel times by up to 35 minutes.

Victoria's Big Build is driving significant change in the reuse of waste material, through the Victorian governments ecologiQ program and the implementation of the Recycled First Policy. These programs see the integration of recycled content across Victoria's transport infrastructure projects, requiring bidders on transport projects to optimise their use of reused and recycled materials, and make use of greener materials.

### Rubber T-Lok Barrier

- ✓ ASBAP approval to 100km/h
- ✓ Freestanding barrier
- ✓ Combats waste with the inclusion of recycled rubber
- ✓ Increased energy absorption
- ✓ Low deflection

## TESTIMONIAL



Saferoads Rubber T-Lok Barriers have performed well since their deployment on the North East Link Project. They are still new in appearance, with no visible signs of cracking or dilapidation. The barriers have provided us with a more sustainable product utilising recycled rubber for a temporary construction scope that has historically considered concrete or steel to be the only option. Saferoads expertise and support has been superb, ranging from technical queries on barrier impact loading, systems lengths and layouts, right through to transport and lifting techniques delivered with on-site guidance from their expert team.

Scott Davis, Traffic Manager - Spark, North East Link

## OUTCOME

In an Australian-first, *Saferoads* Rubber T-Lok Barriers are helping protect hundreds of workers building North East Link and saving tonnes of waste from going to landfill.

The Rubber T-Lok was deployed on the northbound carriage way of Bulleen Rd on one of the largest infrastructure projects in the southern hemisphere, the North East Link Tunnel. The barriers' delivery is thanks to tunnelling contractor Spark, which has installed more than 280 *Saferoads* Rubber T-Lok temporary barriers across the project. Keeping traffic moving during construction is a priority, and safety barriers between the road and site are crucial to keeping everyone safe. The Rubber T-Lok Barriers are also being used within construction sites to separate workers from heavy machinery and haul roads.

Almost 56 million used tyres are discarded nationally every year, but just 10% are recycled. For every 1km of Rubber T-Lok Barrier produced, 12 tonnes of recycled tyres are used - equivalent to 2000 tyres - supporting local jobs by building a sustainable and thriving circular economy.

North East Link is expected to open in 2028 and is jointly funded by the Australian and Victorian Governments.





# Driven by **Innovation**

**Servicing**

Australia | New Zealand | North America | Europe | Asia



**saferoads.com.au**

**1800 SAFEROADS**  
1800 060 672